



# LABOUR FORCE

NEW SOUTH WALES AND  
AUSTRALIAN CAPITAL TERRITORY

EMBARGO: 11:30AM (CANBERRA TIME) FRI 27 APR 2001

## CONTENTS

	<i>page</i>
Notes .....	2
 SUMMARY OF FINDINGS	
New South Wales .....	3
Australian Capital Territory .....	8
 LIST OF TABLES AND GRAPHS	
New South Wales .....	11
Australian Capital Territory .....	12
 INFORMATION	
Explanatory notes .....	46
Appendix:	
Supplementary topics .....	51
Regions of NSW and ACT .....	52
Regions of NSW and ACT — maps .....	57
Technical note: data reliability .....	58
Standard errors .....	61

- For further information about these and related statistics, contact Jill Tomlinson on Sydney 02 9268 4123 or the National Information Service on 1300 135 070.

## NOTES

**FORTHCOMING ISSUES**                      *ISSUE (Quarter)*                      *EXPECTED RELEASE DATE*

	May 2001	27 July 2001
	August 2001	26 October 2001

**ABOUT THIS PUBLICATION**

This publication contains estimates of the civilian labour force in New South Wales (NSW) and the Australian Capital Territory (ACT) derived from the Labour Force Survey (LFS) component of the Monthly Population Survey, which is conducted on a sample basis throughout Australia. Explanatory notes for data contained in this publication can be found on page 46. Care should be taken in the interpretation of month-to-month movements in the estimates. Survey estimates are subject to sampling and non-sampling variability as explained in the Technical note on data reliability on page 58.

**SYMBOLS AND OTHER USAGES**

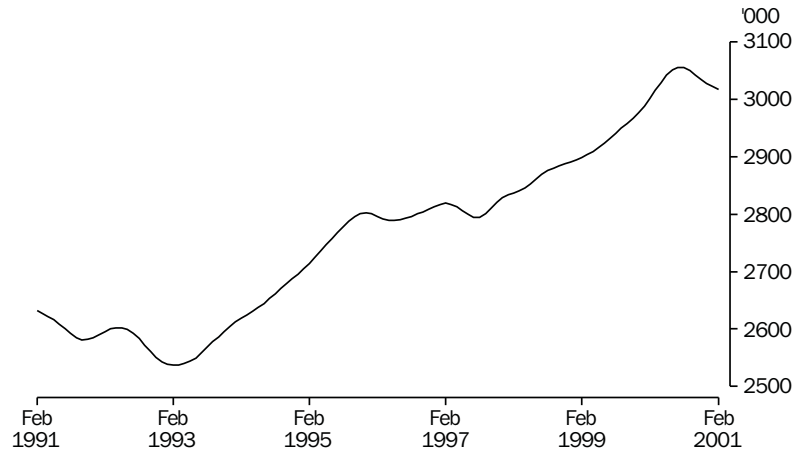
A	Area
C	City
MSR	Major Statistical Region
n.e.c.	Not elsewhere classified
SD	Statistical Division
SR	Statistical Region
SRS	Statistical Region Sector
*	Subject to sampling variability too high for most practical purposes. See the Technical note on data reliability.
. .	Not applicable
—	Nil or rounded to zero (including null cells)

Geoff Smith  
Acting Regional Director  
New South Wales

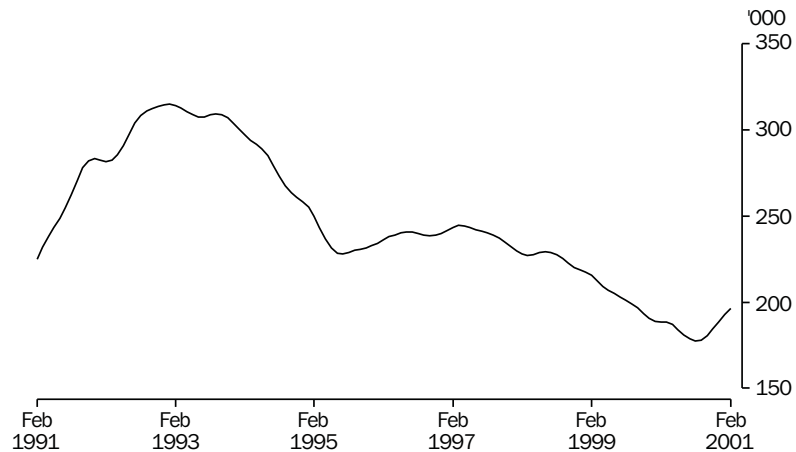
## SUMMARY OF FINDINGS — NEW SOUTH WALES

### TREND ESTIMATES

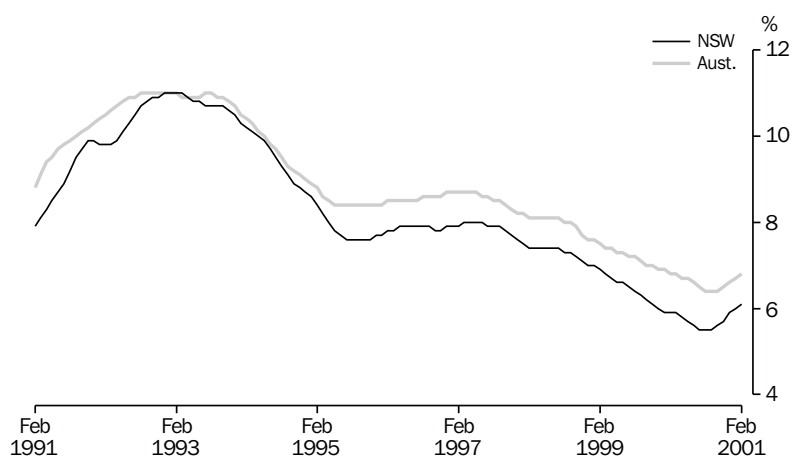
**Employed persons** The trend estimate of employed persons rose steadily from July 1997 and reached a peak of 3,056,100 in July 2000. Since then it has declined to 3,017,900 in February 2001.



**Unemployed persons** The trend estimate of unemployed persons in NSW peaked at 244,400 in March 1997. It then fell steadily to 177,400 in August 2000, before rising again to reach 196,100 in February 2001.



Unemployment rate The trend unemployment rate in NSW declined from 7.9% to 5.5% between September 1997 and September 2000. Since then it has risen steadily to 6.1% in February 2001.



Participation rate and labour force The trend estimate of the participation rate in NSW peaked at 62.8% in June and July 2000. Since then it has fallen steadily to 62.0% in February 2001.

The trend estimated labour force in NSW has declined from a high of 3,234,900 in July 2000 to reach 3,214,000 in February 2001.

#### SEASONALLY ADJUSTED ESTIMATES

The seasonally adjusted estimate of employment in NSW rose throughout the first half of 2000 and reached 3,071,600 in August 2000. It has since declined to 3,022,000 in February 2001. The seasonally adjusted estimate of the number of unemployed moved downward in the first half of 2000, before rising again to reach 200,500 in February 2001. The seasonally adjusted estimate of the unemployment rate also moved downwards throughout most of 2000, but has risen since October to reach 6.2% in February 2001.

#### REGIONS OF NSW

While the Labour Force Survey (LFS) is designed primarily to produce reliable estimates at the national and State/Territory level, it also delivers estimates for a number of regions within States. As with national and State estimates, regional labour force estimates are subject to sampling error. Since estimates for regions are components of corresponding estimates at the State level — and are thus based on a considerably smaller sample size — they are subject to higher relative standard errors. Care should therefore be taken in interpretation of regional estimates, particularly month-to-month movements.

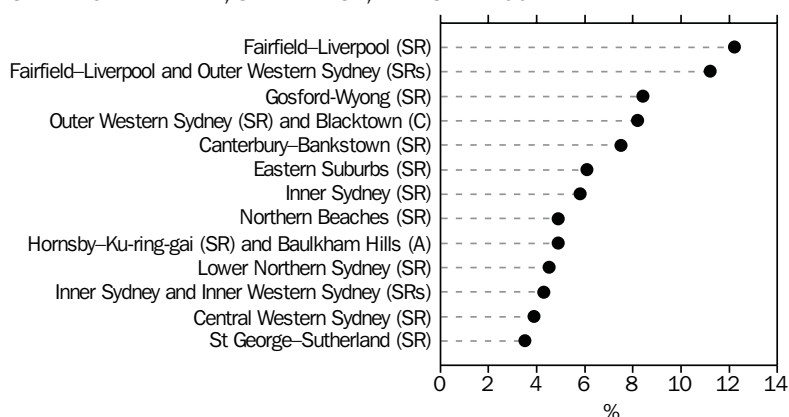
Sydney There were 1,979,500 employed people in the Sydney Major Statistical Region (MSR) in February 2001, a rise of 11,100 over the year from February 2000. Between February 2000 and February 2001, the unemployment rate rose from 5.6% to 6.3%.

Regional unemployment rates within the Sydney MSR in February 2001 ranged from 3.5% in St George–Sutherland Statistical Region (SR) to 12.2% in Fairfield–Liverpool SR. Participation rates varied from 54.7% in Canterbury–Bankstown SR to 70.9% in Inner Sydney SR.

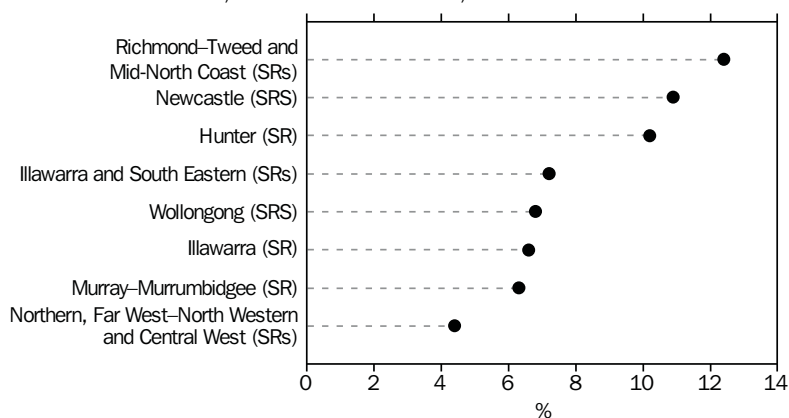
Balance of NSW There were 1,016,300 employed people in Balance of NSW MSR in February 2001, 8,400 more than in February 2000. The unemployment rate in February 2001 was 8.3%, a decrease of 0.4 percentage points on the figure recorded in February 2000.

Unemployment rates ranged from 4.4% in the Northern, Far West–North Western and Central West SRs to 12.4% in the Richmond–Tweed and Mid-North Coast SRs. Participation rates varied from 54.1% in the Richmond–Tweed and Mid-North Coast SRs to 64.5% in the Murray–Murrumbidgee SR.

UNEMPLOYMENT RATE, SYDNEY MSR, FEBRUARY 2001



UNEMPLOYMENT RATE, BALANCE OF NSW MSR, FEBRUARY 2001



## INDUSTRY AND OCCUPATION

The industry in NSW with the highest gain in employment in the year to February 2001 was Property and business services with an increase of 58,900 persons or 17.1%. The largest fall occurred in the Construction sector, down 32,600 persons or 13.4%.

The industries with the highest employment in February 2001 were Retail trade with 432,200 persons (14.4% of total employed persons in NSW) and Property and business services with 403,300 persons (13.5% of total employed).

The major occupation group with the largest annual gain in employment in the year to February 2001 was Intermediate clerical, sales and service workers with an increase of 37,100 persons (7.1%) while the largest percentage fall was in the Tradespersons and related workers group, down by 37,800 persons or 9.5%.

AGE

The unemployment rate at February 2001 decreased with age from 20.8% for 15–19 year olds to 4.7% for the 45–54 years age group. The rate for the age group 55 years and over was 3.8%.

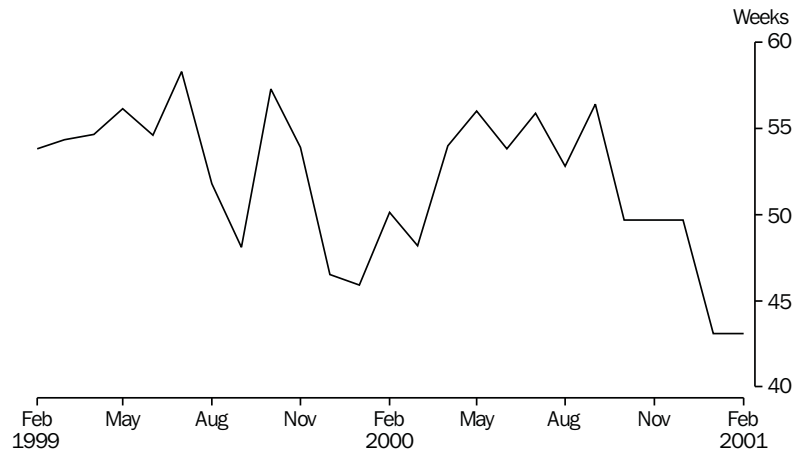
BIRTHPLACE

In February 2001, the unemployment rate for Australian-born people in NSW was 7.2%. For those born overseas in the main English-speaking countries the rate was 4.8% while for those born in other countries it was 7.4%.

DURATION OF UNEMPLOYMENT

In February 2001, the average (mean) duration of unemployment was 43.1 weeks and the median duration of unemployment was 9 weeks. More than 14% of all unemployed persons had been unemployed for two years or more.

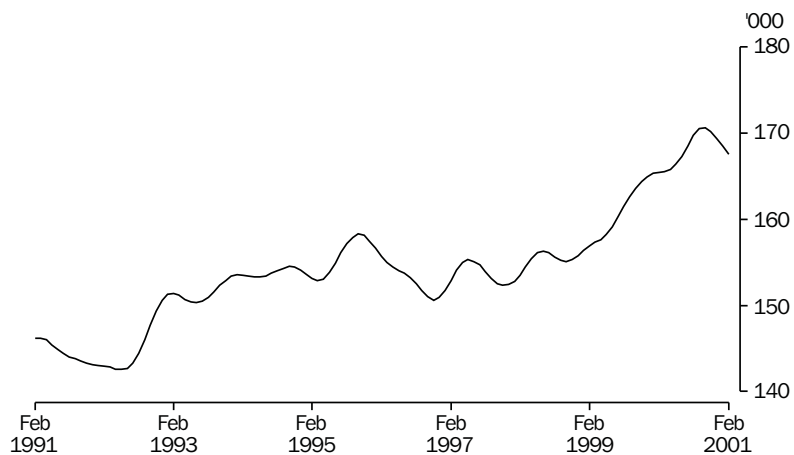
Average duration of unemployment



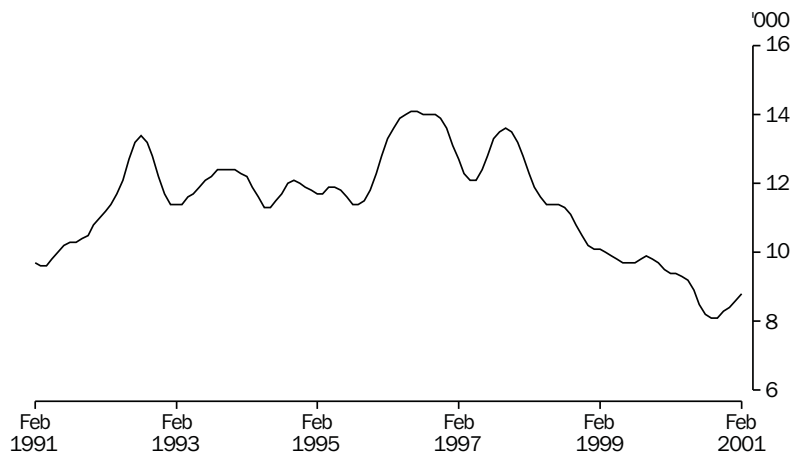
## SUMMARY OF FINDINGS — AUSTRALIAN CAPITAL TERRITORY

### TREND ESTIMATES

**Employed persons** The trend estimate of employed persons in the ACT rose steadily throughout 1999 and most of 2000. Since October 2000, however, it has declined slightly and in February 2001 was 167,500.

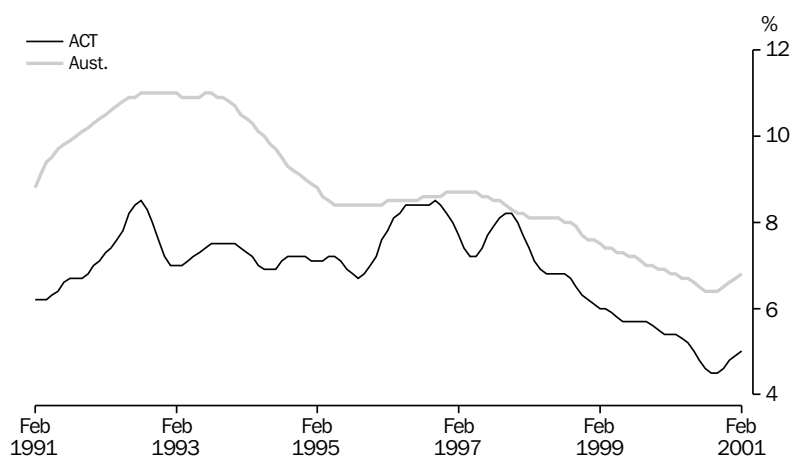


**Unemployed persons** From a peak of 13,500 in October 1997, the trend estimate of unemployment in the ACT moved gradually downwards, reaching 8,100 in October 2000. Since then it has risen to 8,800 in February 2001.





Unemployment rate The trend unemployment rate in the ACT fell steadily between October 1997 and October 2000. It has risen since then, however, and reached 5.0% in February 2001.



Participation rate and labour force The ACT trend participation rate rose slightly between May and October 2000 but since then has dropped again to reach 72.4% in February 2001. The trend labour force estimate was 176,300 in February 2001.

#### INDUSTRY AND OCCUPATION

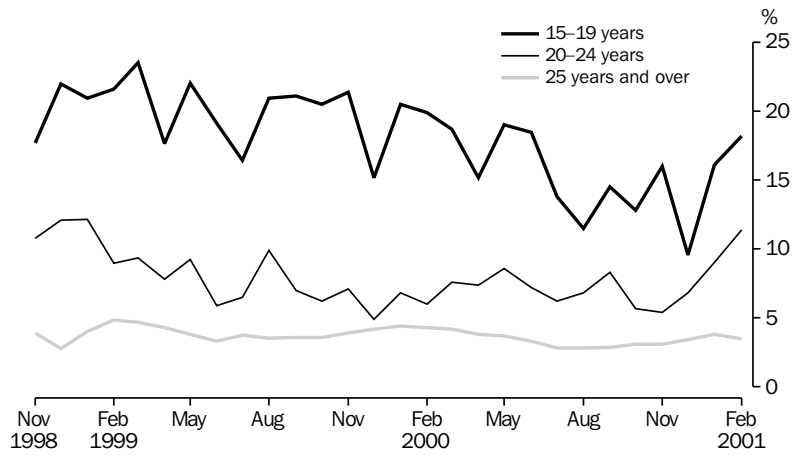
There was an average of 37,000 people employed in Government administration and defence in the ACT for the year ending February 2001, a decrease of 1,700 on the average for the previous year. This industry sector accounted for 21.9% of total employment in the ACT in February 2001. Property and business services accounted for 15.1% of total employment.

For the year ending February 2001, the largest occupation group in the ACT was Professionals. This group had an average of 46,300 employed persons over the year, constituting 27.4% of the total number of employed persons.

#### AGE

In February 2001, the proportion of employed people working part-time in the ACT ranged from 76.2% of 15–19 year olds to 17.9% of those aged 25 years and over. The average weekly hours worked by employed persons in the age group 15–19 years was 18.6 while those in the age group 25 years and over worked an average of 36.3 hours. The unemployment rates for these age groups were 18.2% and 3.5%, respectively.

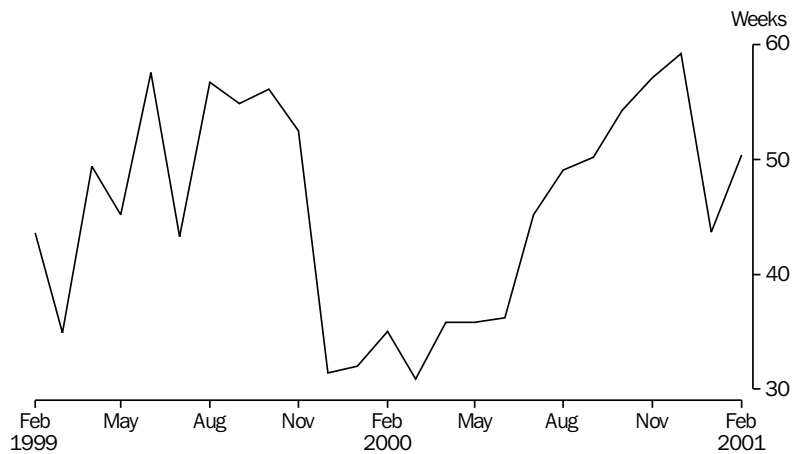
Unemployment rate by age



DURATION OF UNEMPLOYMENT

The average duration of unemployment in the ACT in February 2001 was 50.4 weeks. The average has ranged between 31 and 59 weeks over the past year.

Average duration of unemployment



## LIST OF TABLES AND GRAPHS

NEW SOUTH WALES		Page
Tables	Labour force status:	
	<b>1</b> Original series	13
	<b>2</b> Seasonally adjusted and trend series	14
	<b>3</b> Age, February 2001	16
	<b>4</b> Persons aged 15–24 by full-time educational attendance, February 2001	17
	<b>5</b> Family status, February 2001	18
Graphs	Labour force status:	
	Trend series, February 1991–February 2001:	
	Employed males	15
	Employed females	15
	Unemployed males	15
	Unemployed females	15
	Male unemployment rate	15
	Female unemployment rate	15
	Male participation rate	15
	Female participation rate	15
Tables	Employed persons:	
	<b>6</b> Status in employment	18
	<b>7</b> Age	19
	<b>8</b> Industry, February 2000 and February 2001	20
	<b>9</b> Occupation, February 2000 and February 2001	22
Graphs	Employed persons:	
	Annual change in employment by age, February 2000–February 2001	19
	Annual change in employment by industry division, February 2000–February 2001	21
	Annual change in employment by occupation group, February 2000–February 2001	23
Tables	Unemployed persons:	
	<b>10</b> Age	24
	<b>11</b> Unemployment rate by age	24
	<b>12</b> Industry and occupation of last full-time job, February 2001	25
	<b>13</b> Duration of unemployment	26
	<b>14</b> Unemployment rate by birthplace and period of arrival	26
	<b>15</b> Duration of unemployment by age	27
Graphs	Unemployment rate:	
	Unemployment rate by age, February 1999–February 2001	25
	Unemployment rate by period of arrival of overseas born, February 2001	26

Tables	Regional data:	
	Labour force status	
	<b>16</b> Sydney Major Statistical Region	28
	<b>17</b> Balance of NSW Major Statistical Region	29
	Employed persons:	
	<b>18</b> Industry and occupation, Sydney Major Statistical Region and Balance of NSW Major Statistical Region, February 2001	30
	<b>19</b> Labour force status of regions of NSW and ACT	31
AUSTRALIAN CAPITAL TERRITORY		
Tables	Labour force status:	
	<b>20</b> Original series	39
	<b>21</b> Trend series	40
	<b>22</b> Age, February 2001	42
	<b>23</b> Non-institutionalised persons, birthplace and year of arrival, February 2001	42
Graphs	Labour force status:	
	Trend series, February 1991–February 2001	
	Employed males	41
	Employed females	41
	Unemployed males	41
	Unemployed females	41
	Male unemployment rate	41
	Female unemployment rate	41
	Male participation rate	41
	Female participation rate	41
Tables	Employed persons:	
	<b>24</b> Industry, average for year ending February 2000 and February 2001	43
	<b>25</b> Occupation, average for year ending February 2000 and February 2001	44
	Unemployed persons:	
	<b>26</b> Long-term unemployment	45
Graphs	Employed persons:	
	Average employment by industry division, year ending February 2000 and February 2001	43
	Average employment by occupation group, year ending February 2000 and February 2001	44
	Unemployed persons:	
	Long-term unemployed as a proportion of total unemployed, December 1999–February 2001	45

TABLE 1. LABOUR FORCE STATUS: ORIGINAL SERIES, NSW

Month	Employed			Unemployed			Labour force ('000)	Not in labour force ('000)	Civilian population aged 15 and over ('000)	Unemployment rate (per cent)	Participation rate (per cent)
	Full-time workers ('000)	Part-time workers ('000)	Total ('000)	Looking for full-time work ('000)	Looking for part-time work ('000)	Total ('000)					
MALES											
February—											
1997	1,419.5	168.7	1,588.2	141.2	18.8	160.0	1,748.2	664.8	2,413.0	9.2	72.4
1998	1,432.9	167.4	1,600.3	127.7	21.6	149.3	1,749.6	696.4	2,446.1	8.5	71.5
1999	1,453.4	191.5	1,644.9	113.5	19.6	133.1	1,778.0	702.4	2,480.3	7.5	71.7
1999—											
December	1,530.2	180.8	1,711.0	95.2	20.9	116.1	1,827.0	687.5	2,514.5	6.4	72.7
2000—											
January	1,497.6	182.6	1,680.2	104.8	15.1	119.9	1,800.1	717.6	2,517.7	6.7	71.5
February	1,503.6	190.4	1,694.0	95.8	18.0	113.8	1,807.8	713.1	2,520.9	6.3	71.7
November	1,489.4	210.8	1,700.1	88.3	16.6	104.8	1,805.0	742.5	2,547.4	5.8	70.9
December	1,512.9	214.2	1,727.2	94.4	19.0	113.4	1,840.5	708.9	2,549.4	6.2	72.2
2001—											
January	1,473.0	207.1	1,680.0	107.4	18.6	126.0	1,806.1	745.2	2,551.3	7.0	70.8
February	1,477.7	201.9	1,679.6	105.7	24.4	130.0	1,809.7	743.5	2,553.2	7.2	70.9
MARRIED FEMALES											
February—											
1997	396.2	298.8	695.1	26.4	17.0	43.3	738.4	652.5	1,391.0	5.9	53.1
1998	398.1	319.0	717.2	30.6	15.1	45.7	762.9	696.3	1,459.2	6.0	52.3
1999	408.4	317.7	726.1	24.3	14.4	38.7	764.8	681.0	1,445.8	5.1	52.9
1999—											
December	454.4	326.7	781.1	14.4	11.0	25.4	806.5	672.1	1,478.5	3.1	54.5
2000—											
January	440.8	300.5	741.2	16.9	8.5	25.4	766.7	710.5	1,477.2	3.3	51.9
February	441.6	338.7	780.3	21.7	14.2	35.9	816.2	672.5	1,488.8	4.4	54.8
November	453.6	330.9	784.4	15.4	7.3	22.7	807.2	685.6	1,492.8	2.8	54.1
December	449.5	345.6	795.1	16.6	* 5.2	21.7	816.9	671.6	1,488.5	2.7	54.9
2001—											
January	441.7	325.3	767.0	17.1	10.4	27.6	794.6	699.8	1,494.3	3.5	53.2
February	450.4	332.0	782.4	17.4	10.6	28.0	810.4	680.7	1,491.1	3.5	54.3
ALL FEMALES											
February—											
1997	727.8	468.3	1,196.2	79.4	45.5	125.0	1,321.1	1,183.4	2,504.6	9.5	52.7
1998	709.5	482.9	1,192.3	71.2	39.6	110.8	1,303.2	1,232.7	2,535.9	8.5	51.4
1999	738.4	498.0	1,236.4	67.4	37.1	104.5	1,340.9	1,226.8	2,567.7	7.8	52.2
1999—											
December	788.4	518.5	1,307.0	54.7	26.2	80.9	1,387.9	1,210.4	2,598.3	5.8	53.4
2000—											
January	776.9	480.3	1,257.2	55.3	25.4	80.7	1,337.9	1,262.8	2,600.7	6.0	51.4
February	755.7	526.6	1,282.3	57.0	41.2	98.2	1,380.5	1,222.7	2,603.2	7.1	53.0
November	787.6	530.5	1,318.1	43.6	27.0	70.6	1,388.7	1,236.2	2,624.9	5.1	52.9
December	799.2	545.0	1,344.3	53.4	22.9	76.2	1,420.5	1,205.9	2,626.4	5.4	54.1
2001—											
January	785.8	512.5	1,298.3	48.3	28.8	77.1	1,375.4	1,252.2	2,627.7	5.6	52.3
February	790.6	525.5	1,316.2	59.6	36.4	96.0	1,412.1	1,216.9	2,629.0	6.8	53.7
PERSONS											
February—											
1997	2,147.3	637.1	2,784.4	220.6	64.3	284.9	3,069.3	1,848.3	4,917.6	9.3	62.4
1998	2,142.4	650.3	2,792.7	198.9	61.2	260.1	3,052.8	1,929.1	4,981.9	8.5	61.3
1999	2,191.8	689.5	2,881.3	180.9	56.7	237.5	3,118.8	1,929.2	5,048.0	7.6	61.8
1999—											
December	2,318.6	699.3	3,017.9	149.9	47.1	197.0	3,214.9	1,897.9	5,112.8	6.1	62.9
2000—											
January	2,274.5	662.9	2,937.4	160.1	40.5	200.6	3,138.0	1,980.4	5,118.4	6.4	61.3
February	2,259.3	717.0	2,976.3	152.8	59.2	212.0	3,188.3	1,935.7	5,124.0	6.6	62.2
November	2,277.0	741.3	3,018.2	131.9	43.5	175.4	3,193.7	1,978.7	5,172.4	5.5	61.7
December	2,312.2	759.3	3,071.4	147.8	41.8	189.6	3,261.0	1,914.8	5,175.8	5.8	63.0
2001—											
January	2,258.8	719.6	2,978.4	155.7	47.4	203.1	3,181.5	1,997.5	5,179.0	6.4	61.4
February	2,268.3	727.5	2,995.8	165.2	60.8	226.0	3,221.8	1,960.4	5,182.2	7.0	62.2

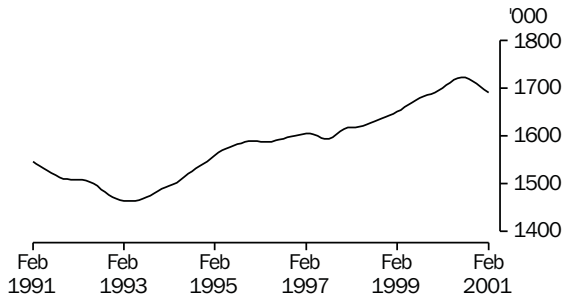
TABLE 2. LABOUR FORCE STATUS: SEASONALLY ADJUSTED AND TREND SERIES, NSW

Month	Seasonally adjusted series					Trend series (a)				
	Employed ('000)	Unemp-loyed ('000)	Labour force ('000)	Unemp-loyment rate (per cent)	Partici-pation rate (per cent)	Employed ('000)	Unemp-loyed ('000)	Labour force ('000)	Unemp-loyment rate (per cent)	Partici-pation rate (per cent)
MALES										
February—										
1997	1,590.7	146.8	1,737.5	8.4	72.0	1,604.8	141.6	1,746.4	8.1	72.4
1998	1,604.1	136.7	1,740.8	7.9	71.2	1,618.3	132.5	1,750.9	7.6	71.6
1999	1,650.0	122.0	1,772.0	6.9	71.4	1,650.8	123.2	1,773.9	6.9	71.5
1999—										
December	1,690.4	116.7	1,807.1	6.5	71.9	1,691.2	109.0	1,800.2	6.1	71.6
2000—										
January	1,694.2	109.5	1,803.7	6.1	71.6	1,695.2	107.8	1,803.0	6.0	71.6
February	1,699.7	104.3	1,804.0	5.8	71.6	1,700.4	107.0	1,807.5	5.9	71.7
March	1,702.5	108.9	1,811.4	6.0	71.8	1,706.3	106.4	1,812.7	5.9	71.8
April	1,713.8	105.3	1,819.0	5.8	72.0	1,712.1	105.6	1,817.7	5.8	71.9
May	1,722.1	102.1	1,824.2	5.6	72.1	1,717.4	104.5	1,821.9	5.7	72.0
June	1,720.0	104.2	1,824.2	5.7	72.0	1,721.0	103.7	1,824.7	5.7	72.0
July	1,722.4	106.7	1,829.1	5.8	72.1	1,722.7	103.5	1,826.2	5.7	72.0
August	1,720.1	101.5	1,821.6	5.6	71.7	1,722.4	103.7	1,826.1	5.7	71.9
September	1,723.4	104.3	1,827.6	5.7	71.9	1,719.7	104.7	1,824.4	5.7	71.7
October	1,716.9	106.1	1,823.1	5.8	71.6	1,715.1	106.6	1,821.7	5.9	71.6
November	1,707.3	106.9	1,814.2	5.9	71.2	1,709.5	109.1	1,818.6	6.0	71.4
December	1,707.0	114.0	1,821.0	6.3	71.4	1,703.3	111.9	1,815.1	6.2	71.2
2001—										
January	1,694.7	114.6	1,809.3	6.3	70.9	1,697.1	114.6	1,811.7	6.3	71.0
February	1,685.5	119.2	1,804.7	6.6	70.7	1,691.6	117.2	1,808.8	6.5	70.9
FEMALES										
February—										
1997	1,214.1	105.8	1,319.8	8.0	52.7	1,214.1	101.6	1,315.8	7.7	52.5
1998	1,210.7	93.7	1,304.3	7.2	51.4	1,219.0	95.2	1,314.2	7.2	51.8
1999	1,255.5	88.4	1,343.9	6.6	52.3	1,247.5	92.4	1,339.9	6.9	52.2
1999—										
December	1,284.7	81.9	1,366.6	6.0	52.6	1,285.7	81.6	1,367.3	6.0	52.6
2000—										
January	1,287.5	79.8	1,367.3	5.8	52.6	1,293.6	81.1	1,374.7	5.9	52.9
February	1,302.1	83.2	1,385.3	6.0	53.2	1,301.3	81.4	1,382.8	5.9	53.1
March	1,311.1	83.1	1,394.2	6.0	53.5	1,309.1	81.9	1,391.0	5.9	53.4
April	1,320.3	79.8	1,400.1	5.7	53.7	1,317.2	81.4	1,398.6	5.8	53.6
May	1,327.1	82.8	1,409.9	5.9	54.0	1,324.9	79.7	1,404.6	5.7	53.8
June	1,319.3	81.5	1,400.8	5.8	53.6	1,330.6	77.4	1,408.0	5.5	53.9
July	1,332.4	67.2	1,399.6	4.8	53.5	1,333.4	75.3	1,408.7	5.3	53.8
August	1,351.4	75.4	1,426.8	5.3	54.5	1,333.1	73.7	1,406.8	5.2	53.7
September	1,331.9	73.6	1,405.5	5.2	53.6	1,330.6	73.3	1,403.8	5.2	53.6
October	1,321.8	71.9	1,393.8	5.2	53.1	1,327.4	73.9	1,401.4	5.3	53.4
November	1,314.9	76.6	1,391.5	5.5	53.0	1,325.2	75.2	1,400.4	5.4	53.3
December	1,320.9	77.2	1,398.1	5.5	53.2	1,324.4	76.7	1,401.1	5.5	53.3
2001—										
January	1,329.4	76.6	1,406.0	5.4	53.5	1,325.1	78.1	1,403.2	5.6	53.4
February	1,336.4	81.3	1,417.7	5.7	53.9	1,326.3	78.9	1,405.2	5.6	53.5
PERSONS										
February—										
1997	2,804.8	252.5	3,057.3	8.3	62.2	2,818.9	243.2	3,062.1	7.9	62.3
1998	2,814.8	230.4	3,045.2	7.6	61.1	2,837.3	227.8	3,065.1	7.4	61.5
1999	2,905.5	210.4	3,115.9	6.8	61.7	2,898.3	215.6	3,113.9	6.9	61.7
1999—										
December	2,975.1	198.6	3,173.7	6.3	62.1	2,976.9	190.6	3,167.5	6.0	62.0
2000—										
January	2,981.7	189.3	3,171.1	6.0	62.0	2,988.8	189.0	3,177.8	5.9	62.1
February	3,001.8	187.5	3,189.3	5.9	62.2	3,001.7	188.5	3,190.2	5.9	62.3
March	3,013.6	192.0	3,205.6	6.0	62.5	3,015.4	188.3	3,203.7	5.9	62.4
April	3,034.0	185.1	3,219.1	5.7	62.7	3,029.3	187.0	3,216.4	5.8	62.6
May	3,049.2	184.9	3,234.1	5.7	62.9	3,042.2	184.2	3,226.4	5.7	62.7
June	3,039.3	185.7	3,225.0	5.8	62.6	3,051.6	181.1	3,232.7	5.6	62.8
July	3,054.8	173.9	3,228.7	5.4	62.6	3,056.1	178.8	3,234.9	5.5	62.8
August	3,071.6	176.9	3,248.4	5.4	63.0	3,055.4	177.4	3,232.8	5.5	62.7
September	3,055.3	177.8	3,233.1	5.5	62.6	3,050.2	178.0	3,228.2	5.5	62.5
October	3,038.7	178.1	3,216.8	5.5	62.2	3,042.6	180.5	3,223.1	5.6	62.4
November	3,022.2	183.5	3,205.6	5.7	62.0	3,034.6	184.3	3,219.0	5.7	62.2
December	3,027.9	191.2	3,219.1	5.9	62.2	3,027.7	188.5	3,216.2	5.9	62.1
2001—										
January	3,024.1	191.2	3,215.3	5.9	62.1	3,022.2	192.7	3,214.9	6.0	62.1
February	3,022.0	200.5	3,222.5	6.2	62.2	3,017.9	196.1	3,214.0	6.1	62.0

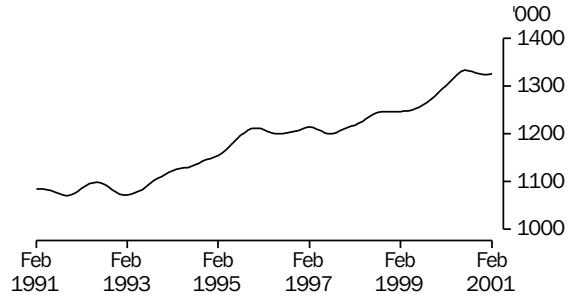
(a) See Explanatory Notes 29 and 30.

TREND SERIES, NSW(a)

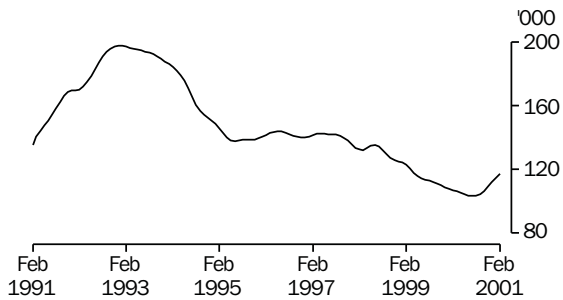
EMPLOYED MALES



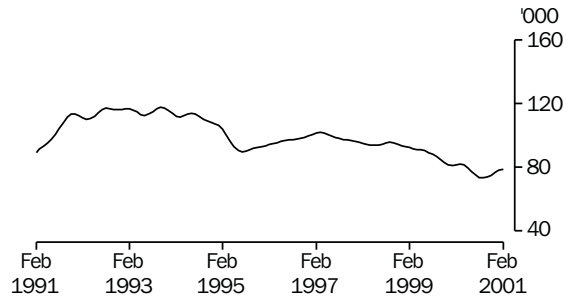
EMPLOYED FEMALES



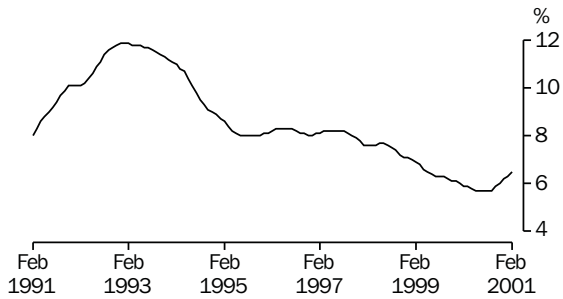
UNEMPLOYED MALES



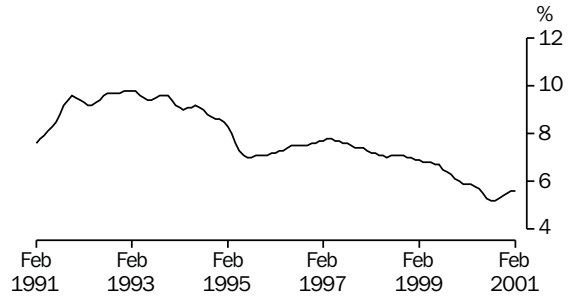
UNEMPLOYED FEMALES



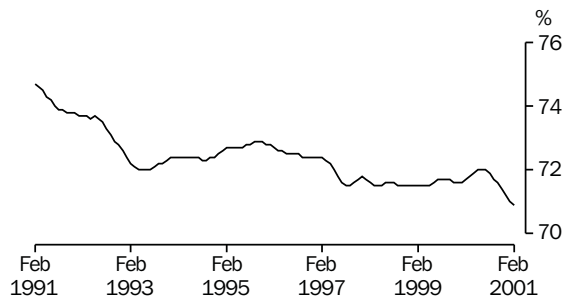
MALE UNEMPLOYMENT RATE



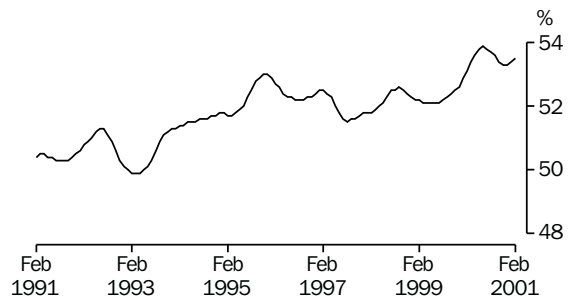
FEMALE UNEMPLOYMENT RATE



MALE PARTICIPATION RATE



FEMALE PARTICIPATION RATE



(a) Comparisons between these graphs should not be made, as their vertical axes are not similarly scaled.

**TABLE 3. LABOUR FORCE STATUS: AGE, NSW, FEBRUARY 2001**

Age group (years)	Employed			Unemployed			Labour force ( <i>'000</i> )	Not in labour force ( <i>'000</i> )	Civilian population aged 15 and over ( <i>'000</i> )	Unemp- loyment rate (per cent)	Partici- pation rate (per cent)
	Full-time workers ( <i>'000</i> )	Part-time workers ( <i>'000</i> )	Total ( <i>'000</i> )	Looking for full- time work ( <i>'000</i> )	Looking for part- time work ( <i>'000</i> )	Total ( <i>'000</i> )					
<b>MALES</b>											
15-19	44.7	59.3	104.0	16.0	13.1	29.1	133.2	95.5	228.7	21.9	58.2
20-24	143.2	30.3	173.5	18.2	* 2.3	20.5	194.0	34.1	228.1	10.6	85.0
25-34	376.0	35.3	411.4	26.0	* 2.9	28.9	440.3	44.7	485.0	6.6	90.8
35-44	411.1	20.0	431.0	21.4	* 1.4	22.8	453.8	42.8	496.6	5.0	91.4
45-54	336.2	24.5	360.7	16.7	* 1.6	18.4	379.1	62.6	441.7	4.8	85.8
55-59	100.6	12.3	112.9	* 5.3	* 0.7	6.0	118.9	50.8	169.7	5.0	70.1
60-64	45.3	9.1	54.4	* 2.0	* 1.3	* 3.4	57.7	79.4	137.1	* 5.8	42.1
65 and over	20.6	11.1	31.8	* 0.0	* 0.9	* 0.9	32.7	333.5	366.2	* 2.8	8.9
<b>Total</b>	<b>1,477.7</b>	<b>201.9</b>	<b>1,679.6</b>	<b>105.7</b>	<b>24.4</b>	<b>130.0</b>	<b>1,809.6</b>	<b>743.5</b>	<b>2,553.2</b>	<b>7.2</b>	<b>70.9</b>
<b>MARRIED FEMALES</b>											
15-19	* 1.1	* 1.1	* 2.1	* 0.4	* 0.0	* 0.4	* 2.5	* 1.4	* 3.9	* 14.4	* 63.8
20-24	24.3	* 5.8	30.1	* 2.3	* 1.3	* 3.5	33.7	18.0	51.6	* 10.5	65.2
25-34	131.6	72.2	203.8	* 4.0	* 3.3	7.3	211.2	106.5	317.7	3.5	66.5
35-44	129.2	118.6	247.8	* 5.8	* 3.3	9.0	256.8	111.0	367.8	3.5	69.8
45-54	125.8	88.7	214.5	* 4.4	* 2.1	6.4	220.9	108.5	329.4	2.9	67.1
55-59	26.7	28.5	55.2	* 0.6	* 0.6	* 1.3	56.5	63.4	119.8	* 2.3	47.1
60-64	8.7	10.0	18.7	* 0.0	* 0.0	* 0.0	18.7	80.6	99.4	* 0.0	18.8
65 and over	* 2.9	7.3	10.2	* 0.0	* 0.0	* 0.0	10.2	191.3	201.5	* 0.0	5.1
<b>Total</b>	<b>450.4</b>	<b>332.0</b>	<b>782.4</b>	<b>17.4</b>	<b>10.6</b>	<b>28.0</b>	<b>810.4</b>	<b>680.7</b>	<b>1,491.1</b>	<b>3.4</b>	<b>54.3</b>
<b>ALL FEMALES</b>											
15-19	32.9	70.3	103.1	10.9	14.3	25.2	128.3	89.9	218.2	19.6	58.8
20-24	114.4	47.3	161.7	12.3	* 5.0	17.2	178.9	42.8	221.8	9.6	80.7
25-34	232.4	96.7	329.1	11.9	* 5.7	17.6	346.7	143.8	490.4	5.1	70.7
35-44	181.3	145.2	326.5	13.9	6.5	20.3	346.9	148.0	494.9	5.9	70.1
45-54	172.1	106.3	278.3	9.0	* 4.3	13.3	291.7	142.4	434.1	4.6	67.2
55-59	40.8	35.7	76.4	* 1.7	* 0.6	* 2.3	78.7	85.5	164.3	* 2.9	47.9
60-64	12.3	13.9	26.1	* 0.0	* 0.0	* 0.0	26.1	109.9	136.1	* 0.0	19.2
65 and over	* 4.5	10.3	14.8	* 0.0	* 0.0	* 0.0	14.8	454.5	469.3	* 0.0	3.2
<b>Total</b>	<b>790.6</b>	<b>525.5</b>	<b>1,316.1</b>	<b>59.6</b>	<b>36.4</b>	<b>96.0</b>	<b>1,412.1</b>	<b>1,216.9</b>	<b>2,629.0</b>	<b>6.8</b>	<b>53.7</b>
<b>PERSONS</b>											
15-19	77.6	129.6	207.2	26.9	27.5	54.3	261.5	185.4	446.9	20.8	58.5
20-24	257.6	77.5	335.2	30.5	7.2	37.8	372.9	77.0	449.9	10.1	82.9
25-34	608.4	132.0	740.4	37.9	8.6	46.5	787.0	188.4	975.4	5.9	80.7
35-44	592.4	165.2	757.6	35.2	7.9	43.1	800.7	190.9	991.5	5.4	80.8
45-54	508.2	130.8	639.0	25.7	6.0	31.7	670.7	205.0	875.8	4.7	76.6
55-59	141.4	48.0	189.4	6.9	* 1.4	8.3	197.7	136.3	334.0	4.2	59.2
60-64	57.6	22.9	80.5	* 2.0	* 1.3	* 3.4	83.9	189.3	273.2	* 4.0	30.7
65 and over	25.2	21.4	46.6	* 0.0	* 0.9	* 0.9	47.5	788.0	835.5	* 2.0	5.7
<b>Total</b>	<b>2,268.3</b>	<b>727.5</b>	<b>2,995.8</b>	<b>165.2</b>	<b>60.8</b>	<b>226.0</b>	<b>3,221.8</b>	<b>1,960.4</b>	<b>5,182.2</b>	<b>7.0</b>	<b>62.2</b>



**TABLE 4. LABOUR FORCE STATUS: PERSONS AGED 15-24 BY FULL-TIME EDUCATIONAL ATTENDANCE, NSW, FEBRUARY 2001**

Age (years)	Employed			Unemployed			Labour force ('000)	Not in labour force ('000)	Civilian population aged 15 and over ('000)	Unemployment rate (per cent)	Participation rate (per cent)
	Full-time workers ('000)	Part-time workers ('000)	Total ('000)	Looking for full-time work ('000)	Looking for part-time work ('000)	Total ('000)					
<b>ATTENDING SCHOOL OR A TERTIARY EDUCATIONAL INSTITUTION FULL—TIME</b>											
15-19	9.7	103.4	113.1	* 5.8	24.2	29.9	143.1	161.7	304.7	20.9	46.9
15	* 0.3	22.0	22.3	* 1.3	10.3	11.6	33.9	51.3	85.2	34.2	39.7
16	* 0.0	26.0	26.0	* 0.3	* 5.5	* 5.7	31.7	47.1	78.9	* 18.1	40.2
17	* 0.7	21.8	22.5	* 0.6	* 4.5	* 5.1	27.6	37.2	64.8	* 18.5	42.6
18	* 4.1	16.9	21.0	* 2.9	* 1.9	* 4.8	25.8	12.5	38.3	* 18.5	67.3
19	* 4.6	16.7	21.4	* 0.7	* 2.1	* 2.8	24.1	13.5	37.6	* 11.5	64.2
20-24	13.2	33.8	46.9	* 3.7	* 4.1	7.8	54.7	32.6	87.3	14.3	62.7
20	* 4.5	13.3	17.8	* 0.7	* 1.9	* 2.6	20.4	10.1	30.5	* 12.7	66.8
21	* 1.5	9.2	10.7	* 0.4	* 1.8	* 2.1	12.9	9.8	22.7	* 16.6	56.7
22	* 2.5	* 5.3	7.9	* 1.5	* 0.0	* 1.5	9.4	* 4.9	14.3	* 16.1	65.8
23	* 2.4	* 4.5	6.9	* 0.4	* 0.4	* 0.9	7.7	* 4.3	12.0	* 11.0	64.3
24	* 2.2	* 1.4	* 3.6	* 0.7	* 0.0	* 0.7	* 4.3	* 3.4	7.8	* 16.4	* 55.7
<b>Total aged 15-24</b>	<b>22.9</b>	<b>137.2</b>	<b>160.0</b>	<b>9.5</b>	<b>28.3</b>	<b>37.7</b>	<b>197.8</b>	<b>194.3</b>	<b>392.0</b>	<b>19.1</b>	<b>50.4</b>
<b>NOT ATTENDING SCHOOL OR A TERTIARY EDUCATIONAL INSTITUTION FULL-TIME (a)</b>											
15-19	67.8	26.2	94.0	21.1	* 3.3	24.4	118.4	23.7	142.1	20.6	83.3
15	* 0.6	* 0.9	* 1.6	* 1.1	* 0.0	* 1.1	* 2.7	* 0.4	* 3.1	* 40.6	* 87.0
16	* 3.7	* 1.6	* 5.3	* 1.2	* 0.3	* 1.5	6.8	* 2.9	9.7	* 21.9	70.1
17	8.3	* 5.8	14.1	* 4.4	* 0.0	* 4.4	18.5	6.1	24.6	* 23.7	75.2
18	28.1	7.9	35.9	7.5	* 1.7	9.2	45.1	6.9	52.0	20.3	86.7
19	27.1	10.0	37.1	6.9	* 1.3	8.3	45.3	7.4	52.7	18.2	86.0
20-24	244.5	43.8	288.3	26.8	* 3.1	30.0	318.2	44.4	362.6	9.4	87.8
20	35.6	10.0	45.6	6.5	* 0.5	7.0	52.6	7.1	59.7	13.3	88.0
21	44.6	7.3	51.9	7.2	* 0.8	8.0	59.9	7.0	66.8	13.3	89.6
22	53.7	8.0	61.8	* 3.6	* 0.5	* 4.1	65.8	9.4	75.2	* 6.2	87.5
23	51.1	11.2	62.3	* 4.0	* 0.9	* 4.8	67.1	10.5	77.6	* 7.2	86.5
24	59.5	7.3	66.7	* 5.6	* 0.5	6.1	72.8	10.4	83.3	8.4	87.5
<b>Total aged 15-24</b>	<b>312.3</b>	<b>70.0</b>	<b>382.3</b>	<b>47.9</b>	<b>6.4</b>	<b>54.4</b>	<b>436.6</b>	<b>68.1</b>	<b>504.7</b>	<b>12.4</b>	<b>86.5</b>
<b>TOTAL</b>											
15-19	77.6	129.6	207.2	26.9	27.5	54.3	261.5	185.4	446.9	20.8	58.5
15	* 1.0	22.9	23.9	* 2.4	10.3	12.6	36.5	51.7	88.3	34.6	41.4
16	* 3.7	27.6	31.3	* 1.5	* 5.7	7.2	38.5	50.0	88.6	18.7	43.5
17	9.0	27.6	36.6	* 5.0	* 4.5	9.5	46.1	43.3	89.4	20.6	51.5
18	32.2	24.7	56.9	10.4	* 3.6	14.0	70.9	19.4	90.3	19.7	78.5
19	31.7	26.7	58.4	7.6	* 3.4	11.0	69.5	20.9	90.3	15.9	76.9
20-24	257.6	77.5	335.2	30.5	7.2	37.8	372.9	77.0	449.9	10.1	82.9
20	40.1	23.3	63.4	7.2	* 2.4	9.6	73.0	17.3	90.2	13.1	80.8
21	46.1	16.5	62.6	7.5	* 2.6	10.1	72.8	16.8	89.5	13.9	81.2
22	56.3	13.4	69.6	* 5.1	* 0.5	* 5.6	75.2	14.3	89.5	* 7.4	84.1
23	53.5	15.7	69.1	* 4.4	* 1.3	* 5.7	74.8	14.8	89.6	* 7.6	83.5
24	61.7	8.7	70.4	6.3	* 0.5	6.8	77.2	13.9	91.0	8.8	84.7
<b>Total aged 15-24</b>	<b>335.2</b>	<b>207.2</b>	<b>542.3</b>	<b>57.4</b>	<b>34.7</b>	<b>92.1</b>	<b>634.4</b>	<b>262.4</b>	<b>896.8</b>	<b>14.5</b>	<b>70.7</b>

(a) Includes institutionalised persons.

TABLE 5. LABOUR FORCE STATUS: FAMILY STATUS, NSW, FEBRUARY 2001

Family status	Employed			Unemployed			Labour force ('000)	Not in labour force ('000)	Civilian population aged 15 and over ('000)	Unemployment rate (per cent)	Participation rate (per cent)
	Full-time workers ('000)	Part-time workers ('000)	Total ('000)	Looking for full-time work ('000)	Looking for part-time work ('000)	Total ('000)					
Member of a family	1,844.1	624.5	2,468.7	125.5	54.5	179.9	2,648.6	1,465.5	4,114.1	6.8	64.4
Husband	982.4	67.8	1,050.2	38.4	6.0	44.4	1,094.6	404.7	1,499.3	4.1	73.0
With children aged 0-14 present	503.0	26.6	529.6	20.4	* 2.3	22.7	552.3	47.4	599.7	4.1	92.1
Without children aged 0-14 present	479.4	41.2	520.6	18.0	* 3.7	21.7	542.3	357.3	899.6	4.0	60.3
With dependants present	583.0	30.3	613.3	22.8	* 2.7	25.5	638.8	58.7	697.5	4.0	91.6
Without dependants present	399.4	37.5	436.9	15.6	* 3.4	18.9	455.8	346.0	801.8	4.2	56.9
Wife	433.5	323.6	757.0	17.0	10.6	27.6	784.6	650.3	1,435.0	3.5	54.7
With children aged 0-14 present	145.8	179.3	325.1	8.0	8.2	16.2	341.3	222.0	563.3	4.7	60.6
Without children aged 0-14 present	287.7	144.3	431.9	9.1	* 2.3	11.4	443.3	428.4	871.7	2.6	50.9
With dependants present	187.5	206.9	394.5	9.3	8.6	17.9	412.4	244.7	657.1	4.3	62.8
Without dependants present	245.9	116.6	362.5	7.7	* 2.0	9.7	372.3	405.6	777.9	2.6	47.9
Not-married male family head	32.6	* 4.6	37.2	* 3.6	* 1.1	* 4.7	41.8	19.5	61.3	* 11.1	68.2
With children aged 0-14 present	9.5	* 1.1	10.6	* 2.3	* 1.1	* 3.3	13.9	* 4.9	18.8	* 24.1	73.8
Without children aged 0-14 present	23.1	* 3.5	26.6	* 1.3	* 0.0	* 1.3	27.9	14.5	42.5	* 4.7	65.8
With dependants present	15.9	* 1.8	17.6	* 3.0	* 1.1	* 4.1	21.7	6.3	28.0	* 18.7	77.4
Without dependants present	16.7	* 2.8	19.5	* 0.6	* 0.0	* 0.6	20.1	13.1	33.2	* 3.0	60.5
Not-married female family head	55.0	45.2	100.1	13.3	6.6	19.9	120.0	116.2	236.2	16.6	50.8
With children aged 0-14 present	25.0	30.9	55.9	8.8	6.0	14.8	70.7	65.0	135.8	20.9	52.1
Without children aged 0-14 present	29.9	14.2	44.2	* 4.5	* 0.6	* 5.1	49.3	51.2	100.4	* 10.3	49.1
With dependants present	35.5	37.1	72.7	10.8	6.6	17.4	90.1	71.9	162.0	19.3	55.6
Without dependants present	19.4	8.0	27.4	* 2.5	* 0.0	* 2.5	29.9	44.3	74.2	* 8.2	40.3
Full-time student aged 15-24 (a)	17.3	119.8	137.1	6.6	25.7	32.3	169.4	160.8	330.2	19.1	51.3
Other child of family head	291.6	56.2	347.8	41.7	* 4.1	45.8	393.6	65.8	459.5	11.6	85.7
Other relative of family head	31.8	7.4	39.2	* 4.8	* 0.4	* 5.2	44.4	48.2	92.7	* 11.7	48.0
Not a member of a family	347.9	80.8	428.6	34.3	* 4.6	38.8	467.5	340.1	807.6	8.3	57.9
Living alone	185.0	33.6	218.6	17.6	* 2.4	20.1	238.7	286.5	525.1	8.4	45.4
Not living alone	162.9	47.1	210.1	16.6	* 2.1	18.8	228.8	53.6	282.5	8.2	81.0
Not family coded	76.3	22.2	98.5	* 5.5	* 1.7	7.2	105.7	154.8	260.5	6.8	40.6
<b>Total</b>	<b>2,268.3</b>	<b>727.5</b>	<b>2,995.8</b>	<b>165.2</b>	<b>60.8</b>	<b>226.0</b>	<b>3,221.8</b>	<b>1,960.4</b>	<b>5,182.2</b>	<b>7.0</b>	<b>62.2</b>

(a) Excludes persons aged 20-24 attending school.

TABLE 6. EMPLOYED PERSONS: STATUS IN EMPLOYMENT (a), NSW ('000)

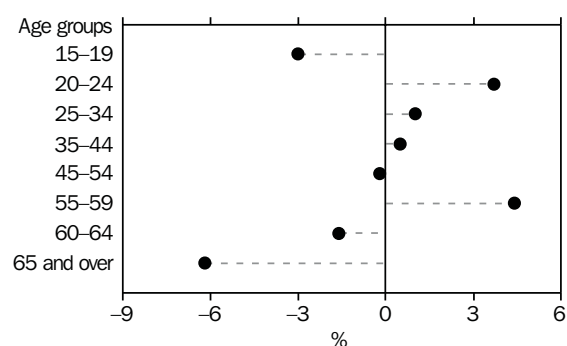
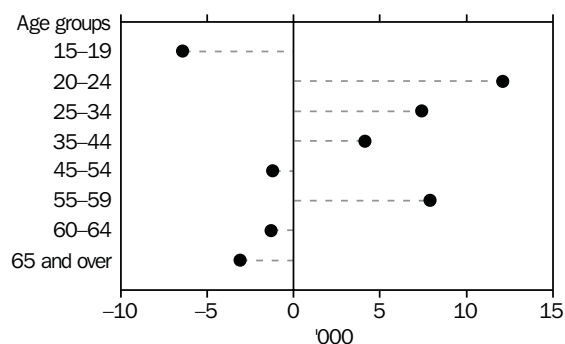
Status in employment	Males			Females			Persons		
	February 2000	November 2000	February 2001	February 2000	November 2000	February 2001	February 2000	November 2000	February 2001
Employees	1,426.9	1,445.5	1,422.6	1,145.0	1,191.2	1,194.6	2,571.9	2,636.8	2,617.1
Employers	75.3	71.7	73.9	34.4	37.0	32.3	109.7	108.6	106.3
Own account workers	184.6	175.5	174.8	89.1	79.7	75.0	273.6	255.2	249.8
<b>Total employed (b)</b>	<b>1,694.0</b>	<b>1,700.1</b>	<b>1,679.6</b>	<b>1,282.3</b>	<b>1,318.1</b>	<b>1,316.1</b>	<b>2,976.3</b>	<b>3,018.2</b>	<b>2,995.8</b>

(a) Status in Employment replaces the previous term Status of Worker. No definitional changes have been made - the only changes are to the classification titles. (b) Includes contributing family workers.

**TABLE 7. EMPLOYED PERSONS: AGE, NSW**  
(\*000)

Month	Age group (years)								Total employed
	15-19	20-24	25-34	35-44	45-54	55-59	60-64	65 and over	
<b>MALES</b>									
2000—									
February	108.6	175.1	418.8	431.1	358.4	109.3	57.1	35.6	1,694.0
2000—									
November	105.5	170.4	417.1	431.2	366.4	114.2	59.5	35.7	1,700.1
December	116.5	176.5	420.3	435.2	365.6	111.4	60.5	41.2	1,727.2
2001—									
January	111.9	171.1	413.3	425.1	356.9	113.6	53.4	34.6	1,680.0
February	104.0	173.5	411.4	431.0	360.7	112.9	54.4	31.8	1,679.6
<b>MARRIED FEMALES</b>									
2000—									
February	* 1.4	40.1	194.0	247.6	219.0	50.0	18.7	9.5	780.3
2000—									
November	* 2.3	33.8	201.3	254.8	217.4	51.3	16.2	7.3	784.4
December	* 2.9	33.5	203.6	256.2	216.0	54.6	18.4	9.8	795.1
2001—									
January	* 3.5	32.7	196.1	246.6	207.1	52.8	17.2	10.9	767.0
February	* 2.1	30.1	203.8	247.8	214.5	55.2	18.7	10.2	782.4
<b>ALL FEMALES</b>									
2000—									
February	105.0	148.0	314.1	322.4	281.7	72.2	24.7	14.1	1,282.3
2000—									
November	103.2	160.9	322.6	333.5	290.4	69.8	24.3	13.2	1,318.1
December	116.2	163.6	331.6	333.1	287.4	71.0	25.4	15.9	1,344.3
2001—									
January	113.2	157.3	321.8	322.0	274.5	69.1	23.0	17.3	1,298.3
February	103.1	161.7	329.1	326.5	278.3	76.4	26.1	14.8	1,316.1
<b>PERSONS</b>									
2000—									
February	213.6	323.1	733.0	753.5	640.2	181.5	81.8	49.7	2,976.3
2000—									
November	208.8	331.3	739.7	764.8	656.8	184.0	83.8	48.9	3,018.2
December	232.7	340.1	751.9	768.3	653.0	182.4	85.9	57.1	3,071.4
2001—									
January	225.2	328.5	735.2	747.0	631.5	182.7	76.5	51.9	2,978.4
February	207.2	335.2	740.4	757.6	639.0	189.4	80.5	46.6	2,995.8

**ANNUAL CHANGE IN EMPLOYMENT BY AGE, NSW, FEBRUARY 2000 TO FEBRUARY 2001**

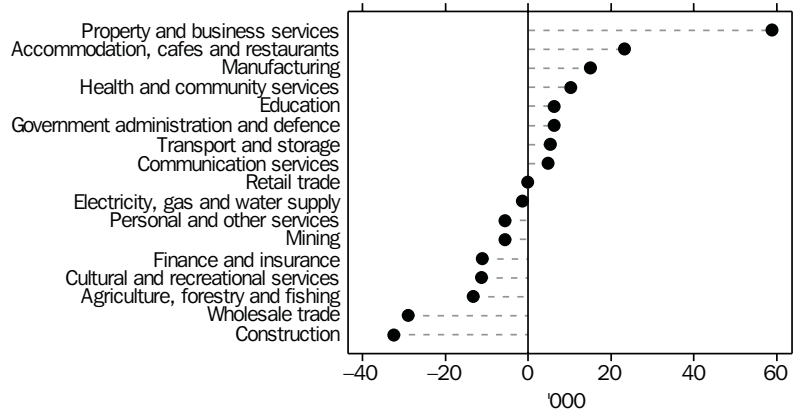


**TABLE 8. EMPLOYED PERSONS: INDUSTRY, NSW**  
(’000)

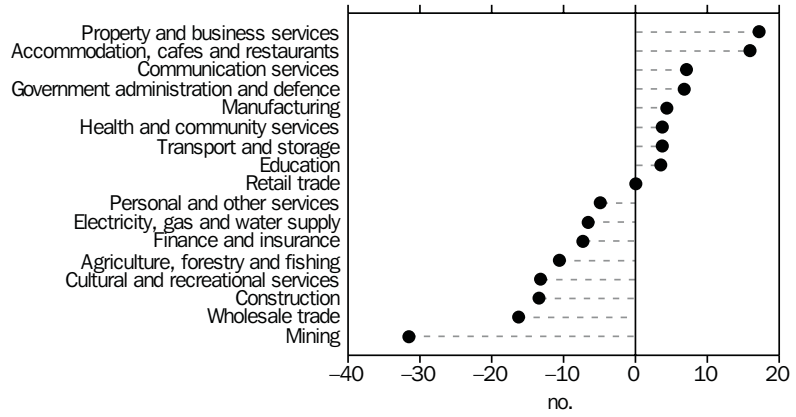
Industry division and subdivision	Males		Females		Persons	
	February 2000	February 2001	February 2000	February 2001	February 2000	February 2001
<i>Agriculture, forestry and fishing</i>	88.8	76.1	36.7	36.0	125.4	112.1
Agriculture	77.7	66.2	35.0	34.1	112.7	100.4
Services to agriculture; hunting and trapping	6.7	* 4.9	* 0.6	* 1.0	7.3	* 5.9
Forestry and logging	* 1.4	* 1.9	* 0.4	* 0.4	* 1.8	* 2.4
Commercial fishing	* 2.9	* 3.0	* 0.7	* 0.5	* 3.6	* 3.5
<i>Mining</i>	17.7	11.7	* 0.4	* 0.6	18.1	12.4
Coal mining	10.7	7.7	* 0.0	* 0.3	10.7	8.0
Oil and gas extraction	* 0.4	* 0.0	* 0.0	* 0.0	* 0.4	* 0.0
Metal ore mining	* 3.4	* 2.7	* 0.4	* 0.0	* 3.7	* 2.7
Other mining	* 3.0	* 0.7	* 0.0	* 0.0	* 3.0	* 0.7
Services to mining	* 0.4	* 0.7	* 0.0	* 0.3	* 0.4	* 1.0
<i>Manufacturing</i>	252.2	258.8	99.3	107.8	351.5	366.5
Food, beverage and tobacco manufacturing	33.0	40.3	16.1	19.8	49.0	60.1
Textile, clothing, footwear and leather manufacturing	11.4	6.7	14.9	14.6	26.3	21.4
Wood and paper product manufacturing	15.3	17.7	* 4.8	7.0	20.2	24.7
Printing, publishing and recorded media	26.5	26.8	14.5	21.7	41.0	48.5
Petroleum, coal, chemical and associated product manufacturing	25.5	21.1	15.9	13.9	41.5	35.0
Non-metallic mineral product manufacturing	12.4	12.0	* 0.3	* 1.9	12.7	13.9
Metal product manufacturing	52.8	62.4	10.7	9.4	63.5	71.7
Machinery and equipment manufacturing	52.5	51.1	16.6	13.8	69.2	65.0
Other manufacturing	22.7	20.7	* 5.4	* 5.6	28.2	26.3
<i>Electricity, gas and water supply</i>	18.4	18.5	* 4.3	* 2.7	22.7	21.2
Electricity and gas supply	13.3	11.4	* 3.3	* 2.4	16.6	13.8
Water supply, sewerage and drainage services	* 5.1	7.1	* 1.0	* 0.3	6.1	7.4
<i>Construction</i>	215.3	184.6	28.5	26.6	243.8	211.2
General construction	77.1	66.1	11.1	8.5	88.2	74.5
Construction trade services	138.2	118.5	17.4	18.2	155.6	136.7
<i>Wholesale trade</i>	127.6	104.9	51.0	44.6	178.6	149.5
Basic material wholesaling	32.0	25.5	9.7	10.7	41.7	36.2
Machinery and motor vehicle wholesaling	52.8	46.3	10.8	12.3	63.6	58.6
Personal and household good wholesaling	42.8	33.1	30.5	21.6	73.3	54.7
<i>Retail trade</i>	208.4	211.2	223.9	221.0	432.3	432.2
Food retailing	71.8	72.9	90.2	92.5	162.0	165.4
Personal and household good retailing	74.2	75.4	113.9	110.5	188.1	185.9
Motor vehicle retailing and services	62.4	62.9	19.8	18.0	82.2	80.9
<i>Accommodation, cafes and restaurants</i>	72.5	83.6	73.7	86.0	146.3	169.6
<i>Transport and storage</i>	107.6	114.3	37.4	36.0	145.0	150.3
Road transport	51.5	56.7	13.2	10.9	64.7	67.6
Rail transport	14.2	20.7	* 2.0	* 2.3	16.1	23.0
Water transport	* 2.1	* 4.4	* 2.0	* 0.3	* 4.1	* 4.7
Air and Space transport	18.0	14.6	6.4	7.5	24.3	22.2
Other transport	* 0.0	* 0.0	* 0.0	* 0.3	* 0.0	* 0.3
Services to transport	12.5	13.3	11.5	13.7	24.0	27.0
Storage	9.3	* 4.5	* 2.4	* 1.0	11.7	* 5.5
<i>Communication services</i>	47.3	52.6	18.6	18.0	65.9	70.6
<i>Finance and insurance</i>	73.2	59.9	79.1	81.3	152.3	141.2
Finance	35.5	25.8	42.8	45.2	78.3	71.0
Insurance	13.7	8.7	13.5	14.7	27.2	23.4
Services to finance and insurance	24.0	25.4	22.8	21.4	46.8	46.8
<i>Property and business services</i>	200.7	221.5	143.7	181.8	344.4	403.3
Property services	23.5	28.3	17.6	22.0	41.0	50.3
Business services	177.3	193.1	126.1	159.8	303.3	352.9
<i>Government administration and defence</i>	53.6	58.8	37.1	38.1	90.7	96.9
Government administration	50.1	53.2	35.1	36.6	85.2	89.9
Defence	* 3.5	* 5.6	* 2.0	* 1.5	* 5.5	7.0
<i>Education</i>	50.9	64.1	130.6	123.7	181.5	187.8
<i>Health and community services</i>	54.6	69.7	222.1	217.1	276.6	286.8
Health services	42.2	53.8	165.4	167.0	207.6	220.8
Community services	12.4	15.9	56.7	50.1	69.1	66.0
<i>Cultural and recreational services</i>	45.6	38.7	39.9	35.5	85.5	74.2
Motion picture, radio and television services	14.7	12.4	9.6	10.7	24.2	23.1
Libraries, museums and the arts	13.4	9.8	13.6	11.5	27.0	21.2
Sport and recreation	17.5	16.5	16.7	13.3	34.3	29.8
<i>Personal and other services</i>	59.5	50.6	56.2	59.4	115.6	109.9
Personal services	23.1	17.5	38.9	39.1	62.0	56.6
Other services	36.1	33.1	17.3	20.3	53.3	53.3
Private households employing staff	* 0.3	* 0.0	* 0.0	* 0.0	* 0.3	* 0.0
<b>Total employed</b>	<b>1,694.0</b>	<b>1,679.6</b>	<b>1,282.3</b>	<b>1,316.1</b>	<b>2,976.3</b>	<b>2,995.8</b>

ANNUAL CHANGE IN EMPLOYMENT BY INDUSTRY DIVISION, NSW, FEBRUARY 2000 TO FEBRUARY 2001

NUMBER



PROPORTION

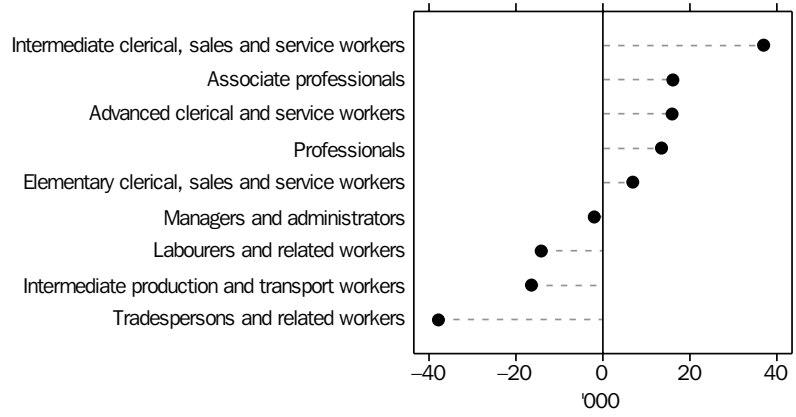


**TABLE 9. EMPLOYED PERSONS: OCCUPATION, NSW  
(<sup>'000</sup>)**

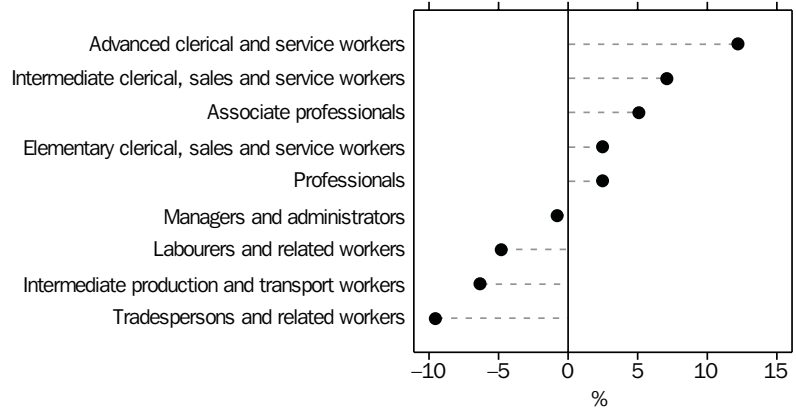
<i>Major and sub-major occupation group</i>	<i>Males</i>		<i>Females</i>		<i>Persons</i>	
	<i>February 2000</i>	<i>February 2001</i>	<i>February 2000</i>	<i>February 2001</i>	<i>February 2000</i>	<i>February 2001</i>
<i>Managers and administrators</i>	183.2	164.4	44.4	61.3	227.6	225.7
Generalist managers	51.8	40.5	* 5.9	8.1	57.7	48.5
Specialist managers	78.8	80.9	22.8	34.0	101.6	115.0
Farmers and farm managers	52.6	43.0	15.7	19.2	68.4	62.2
<i>Professionals</i>	282.1	291.2	272.7	277.1	554.8	568.4
Science, building and engineering professionals	46.2	51.0	9.2	9.5	55.4	60.4
Business and information professionals	118.7	114.2	60.6	70.7	179.3	184.8
Health professionals	25.6	28.3	73.5	73.9	99.1	102.2
Education professionals	33.6	41.6	82.1	84.0	115.7	125.6
Social, arts and miscellaneous professionals	58.1	56.2	47.3	39.1	105.4	95.3
<i>Associate professionals</i>	202.9	211.1	113.7	121.7	316.6	332.8
Science, engineering and related associate professionals	28.9	28.8	10.2	7.1	39.0	35.8
Business and administrative associate professionals	62.3	70.8	45.2	47.5	107.5	118.3
Managing supervisors (sales and service)	87.6	86.4	42.6	47.9	130.1	134.3
Health and welfare associate professionals	* 4.2	* 5.1	7.6	10.6	11.7	15.8
Other associate professionals	20.0	20.0	8.1	8.6	28.2	28.5
<i>Tradespersons and related workers</i>	360.3	325.3	38.9	36.1	399.3	361.5
Mechanical and fabrication engineering tradespersons	64.3	58.6	* 0.6	* 1.0	64.9	59.7
Automotive tradespersons	41.5	43.3	* 0.0	* 0.0	41.5	43.3
Electrical and electronics tradespersons	76.0	64.7	* 0.7	* 1.0	76.6	65.6
Construction tradespersons	90.4	80.3	* 1.8	* 0.3	92.2	80.6
Food tradespersons	16.8	19.9	8.1	6.9	24.9	26.8
Skilled agricultural and horticultural workers	24.5	19.5	* 1.1	* 1.6	25.7	21.1
Other tradespersons and related workers	46.9	39.0	26.5	25.3	73.4	64.3
<i>Advanced clerical and service workers</i>	12.3	18.9	118.3	127.6	130.6	146.5
Secretaries and personal assistants	* 0.7	* 0.4	84.5	86.0	85.1	86.4
Other advanced clerical and service workers	11.6	18.5	33.9	41.6	45.5	60.1
<i>Intermediate clerical, sales and service workers</i>	154.5	172.5	366.6	385.6	521.0	558.1
Intermediate clerical workers	75.0	82.9	234.9	243.6	309.9	326.5
Intermediate sales and related workers	40.6	39.6	18.0	19.1	58.6	58.7
Intermediate service workers	38.9	50.1	113.6	122.9	152.5	173.0
<i>Intermediate production and transport workers</i>	224.5	212.6	34.4	29.9	258.9	242.5
Intermediate plant operators	50.2	46.2	* 1.7	* 3.0	51.9	49.2
Intermediate machine operators	16.1	9.6	10.4	8.8	26.5	18.4
Road and rail transport drivers	92.4	92.8	7.8	* 5.3	100.2	98.0
Other intermediate production and transport workers	65.9	63.9	14.5	12.8	80.3	76.8
<i>Elementary clerical, sales and service workers</i>	89.3	104.2	187.4	179.4	276.7	283.7
Elementary clerks	10.7	13.6	15.2	13.8	25.9	27.4
Elementary sales workers	60.0	67.2	161.2	156.5	221.2	223.6
Elementary service workers	18.6	23.4	11.0	9.2	29.6	32.6
<i>Labourers and related workers</i>	184.9	179.3	105.9	97.4	290.8	276.7
Cleaners	30.9	32.4	35.6	37.6	66.6	70.1
Factory labourers	50.0	46.9	31.0	24.2	80.9	71.2
Other labourers and related workers	104.0	100.0	39.3	35.5	143.3	135.5
<b>Total employed</b>	<b>1,694.0</b>	<b>1,679.6</b>	<b>1,282.3</b>	<b>1,316.1</b>	<b>2,976.3</b>	<b>2,995.8</b>

ANNUAL CHANGE IN EMPLOYMENT BY OCCUPATION GROUP, NSW, FEBRUARY 2000 TO FEBRUARY 2001

NUMBER



PROPORTION



**TABLE 10. UNEMPLOYED PERSONS: AGE, NSW  
(’000)**

Month	Age group (years)						Total unemployed
	15-19	20-24	25-34	35-44	45-54	55 and over	
MALES							
2000— February	24.2	22.6	24.5	23.0	12.4	7.1	113.8
2000— November	21.8	18.1	23.6	21.1	13.5	6.7	104.8
2000— December	24.2	18.1	27.3	20.6	15.6	7.6	113.4
2001— January	28.6	18.7	27.6	23.2	17.2	10.8	126.0
2001— February	29.1	20.5	28.9	22.8	18.4	10.3	130.0
FEMALES							
2000— February	22.1	18.9	21.8	20.4	11.0	* 4.0	98.2
2000— November	17.7	9.0	14.6	15.2	10.4	* 3.7	70.6
2000— December	23.3	11.1	11.9	14.8	10.4	* 4.8	76.2
2001— January	20.9	10.0	13.5	16.6	12.8	* 3.3	77.1
2001— February	25.2	17.2	17.6	20.3	13.3	* 2.3	96.0
PERSONS							
2000— February	46.3	41.5	46.2	43.5	23.3	11.1	212.0
2000— November	39.4	27.1	38.2	36.3	24.0	10.4	175.4
2000— December	47.5	29.2	39.2	35.3	25.9	12.4	189.6
2001— January	49.5	28.7	41.2	39.8	30.0	14.1	203.1
2001— February	54.3	37.8	46.5	43.1	31.7	12.6	226.0

**TABLE 11. UNEMPLOYED PERSONS: UNEMPLOYMENT RATE BY AGE, NSW  
(per cent)**

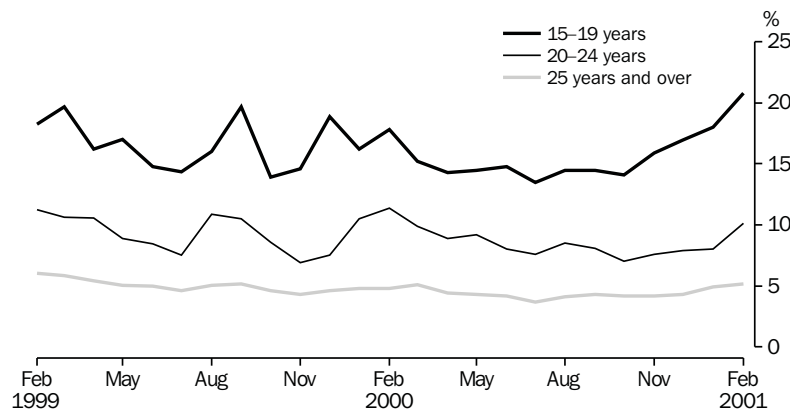
Month	Age group (years)						Total unemployment rate
	15-19	20-24	25-34	35-44	45-54	55 and over	
MALES							
2000— February	18.2	11.4	5.5	5.1	3.3	3.4	6.3
2000— November	17.1	9.6	5.4	4.7	3.6	3.1	5.8
2000— December	17.2	9.3	6.1	4.5	4.1	3.4	6.2
2001— January	20.3	9.8	6.3	5.2	4.6	5.1	7.0
2001— February	21.9	10.6	6.6	5.0	4.8	4.9	7.2
FEMALES							
2000— February	17.4	11.3	6.5	6.0	3.7	* 3.5	7.1
2000— November	14.6	5.3	4.3	4.4	3.5	* 3.3	5.1
2000— December	16.7	6.4	3.5	4.2	3.5	* 4.1	5.4
2001— January	15.6	6.0	4.0	4.9	4.5	* 2.9	5.6
2001— February	19.6	9.6	5.1	5.9	4.6	* 1.9	6.8
PERSONS							
2000— February	17.8	11.4	5.9	5.5	3.5	3.4	6.6
2000— November	15.9	7.6	4.9	4.5	3.5	3.2	5.5
2000— December	16.9	7.9	5.0	4.4	3.8	3.7	5.8
2001— January	18.0	8.0	5.3	5.1	4.5	4.3	6.4
2001— February	20.8	10.1	5.9	5.4	4.7	3.8	7.0



**TABLE 12. UNEMPLOYED PERSONS: INDUSTRY AND OCCUPATION OF LAST FULL-TIME JOB, NSW, FEBRUARY 2001**  
(’000)

	Males	Females	Persons
<i>Had worked for two weeks or more in a full-time job in the last two years</i>	65.2	29.6	94.8
Industry division—			
Agriculture, forestry and fishing	* 3.2	* 0.3	* 3.5
Manufacturing	10.5	* 1.0	11.6
Construction	13.2	* 0.3	13.5
Wholesale trade	* 3.4	* 2.0	* 5.3
Retail trade	* 5.6	* 5.3	10.9
Accommodation, cafes and restaurants	* 2.8	* 3.1	* 5.9
Transport and storage	* 3.9	* 0.0	* 3.9
Finance and insurance	* 1.8	* 1.7	* 3.5
Property and business services	9.1	6.6	15.7
Education	* 1.7	* 2.7	* 4.4
Health and community services	* 1.8	* 2.4	* 4.1
Cultural and recreational services	* 2.2	* 1.8	* 4.0
Personal and other services	* 1.4	* 0.0	* 1.4
Other industries	* 4.7	* 2.5	7.2
Major occupation group—			
Managers and administrators	* 2.1	* 2.0	* 4.0
Professionals	* 5.6	* 4.4	10.0
Associate professionals	* 4.9	* 0.8	* 5.7
Tradespersons and related workers	13.4	* 1.1	14.5
Advanced clerical and service workers	* 0.0	* 3.4	* 3.4
Intermediate clerical, sales and service workers	7.0	8.6	15.5
Intermediate production and transport workers	8.7	* 0.7	9.4
Elementary clerical, sales and service workers	6.6	* 3.6	10.2
Labourers and related workers	17.0	* 5.0	22.0
<i>Had not worked full-time for two weeks or more in the last two years</i>	59.6	61.3	121.0
Looking for first job	19.1	20.1	39.2
Had worked at some time in the past	40.5	41.2	81.8
<i>Stood down</i>	* 5.2	* 5.0	10.2
<b>Total unemployed</b>	<b>130.0</b>	<b>96.0</b>	<b>226.0</b>

UNEMPLOYMENT RATE BY AGE, NSW



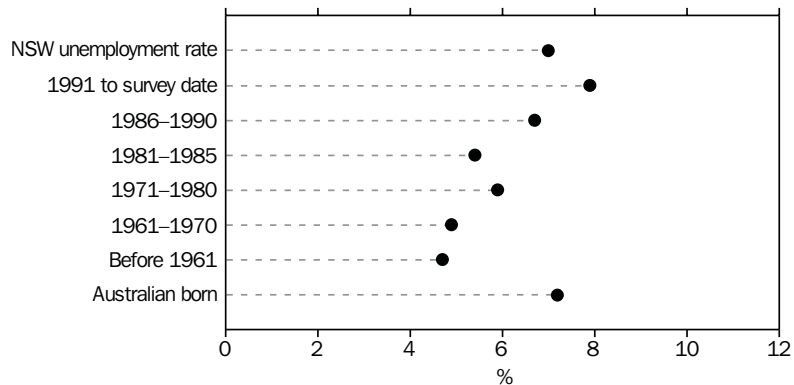
**TABLE 13. UNEMPLOYED PERSONS: DURATION OF UNEMPLOYMENT, NSW**

Duration of unemployment (weeks)	Males		Females		Persons				
	February 2000	February 2001	February 2000	February 2001	February 2000	November 2000	December 2000	January 2001	February 2001
	— '000 —								
Under 52	75.3	96.5	79.8	75.1	155.1	132.0	134.9	154.0	171.6
Under 2	8.0	10.8	13.8	15.4	21.8	21.2	22.1	19.5	26.2
2 and under 4	9.3	12.6	16.6	13.3	25.9	18.3	26.3	27.7	25.9
4 and under 8	15.0	24.2	17.4	21.6	32.3	23.5	23.6	40.2	45.8
8 and under 13	15.7	16.8	11.6	8.7	27.3	17.6	20.8	17.7	25.4
13 and under 26	14.8	14.0	10.8	8.4	25.6	25.5	23.8	23.2	22.5
26 and under 39	8.4	14.2	8.0	* 5.0	16.4	15.1	11.7	20.9	19.2
39 and under 52	* 4.2	* 3.8	* 1.7	* 2.7	* 5.9	10.7	6.6	* 4.8	6.5
52 and over	38.5	33.5	18.4	20.9	56.9	43.5	54.7	49.1	54.4
52 and under 104	11.5	12.6	* 4.7	8.6	16.3	13.2	21.2	23.3	21.3
104 and over	27.0	20.9	13.6	12.3	40.6	30.3	33.5	25.8	33.2
<b>Total unemployed</b>	<b>113.8</b>	<b>130.0</b>	<b>98.2</b>	<b>96.0</b>	<b>212.0</b>	<b>175.4</b>	<b>189.6</b>	<b>203.1</b>	<b>226.0</b>
	— Weeks —								
Average	63.4	48.3	34.6	36.0	50.1	49.7	49.7	43.1	43.1
Median	17	13	8	6	12	14	13	10	9

**TABLE 14. UNEMPLOYED PERSONS: UNEMPLOYMENT RATE BY BIRTHPLACE AND PERIOD OF ARRIVAL, NSW (per cent)**

	February 2000	November 2000	December 2000	January 2001	February 2001
Birthplace—					
Australia	6.9	5.4	5.7	6.3	7.2
Outside Australia	5.9	5.7	6.1	6.7	6.5
Main English speaking countries	5.4	4.2	4.4	5.2	4.8
Other countries	6.2	6.4	7.0	7.5	7.4
Period of arrival of overseas born—					
Before 1961	* 4.3	* 4.7	* 2.8	* 4.7	* 4.7
1961-1970	* 3.1	* 2.8	4.1	5.0	4.9
1971-1980	5.1	5.2	4.3	5.1	5.9
1981-1985	6.3	6.9	8.8	6.4	* 5.4
1986-1990	6.7	5.5	4.9	6.9	6.7
1991 to survey date	7.9	6.9	9.1	9.3	7.9
<b>Total unemployment rate</b>	<b>6.6</b>	<b>5.5</b>	<b>5.8</b>	<b>6.4</b>	<b>7.0</b>

**UNEMPLOYMENT RATE BY PERIOD OF ARRIVAL OF OVERSEAS BORN, NSW—FEBRUARY 2001**



**TABLE 15. UNEMPLOYED PERSONS: DURATION OF UNEMPLOYMENT BY AGE, NSW**

Month	Duration of unemployment (weeks)					Total unemployed persons ('000)	Average duration (weeks)	Median duration (weeks)
	Under 13 ('000)	13 and under 26 ('000)	26 and under 39 ('000)	39 and under 104 ('000)	104 and over ('000)			
15 19								
2000—February	28.7	7.1	* 2.2	* 5.5	* 2.9	46.3	20.6	8
2000—December	31.5	* 4.4	* 2.6	7.8	* 1.2	47.5	17.0	6
2001—January	32.2	6.1	* 3.7	* 5.8	* 1.6	49.5	16.8	6
2001—February	34.3	* 5.5	* 5.3	8.5	* 0.7	54.3	17.1	8
20 24								
2000—February	21.7	* 4.3	* 3.8	* 5.2	6.4	41.5	41.2	10
2000—December	15.1	* 2.9	* 1.9	* 5.7	* 3.6	29.2	39.1	9
2001—January	15.1	* 3.3	* 3.3	* 4.3	* 2.6	28.7	35.6	9
2001—February	22.8	* 2.9	* 3.8	* 3.0	* 5.3	37.8	37.6	6
25 34								
2000—February	25.3	* 4.5	* 3.3	* 3.4	9.8	46.2	48.9	10
2000—December	19.0	5.9	* 2.5	* 5.0	6.8	39.2	50.9	17
2001—January	22.1	* 5.1	* 3.4	* 4.3	6.3	41.2	42.1	9
2001—February	25.9	* 5.7	* 2.9	* 5.0	7.0	46.5	44.3	10
35 44								
2000—February	19.8	* 5.6	* 5.0	* 3.1	9.9	43.5	56.4	17
2000—December	13.3	* 5.7	* 3.0	* 5.2	8.1	35.3	63.8	22
2001—January	17.7	* 3.5	* 5.7	6.7	6.1	39.8	57.9	20
2001—February	21.5	* 4.4	* 4.8	* 5.8	6.5	43.1	46.0	13
45 AND OVER								
2000—February	11.8	* 4.0	* 2.1	* 5.0	11.5	34.5	94.0	34
2000—December	13.9	* 4.9	* 1.6	* 4.2	13.7	38.3	84.0	30
2001—January	18.1	* 5.1	* 4.7	6.9	9.3	44.1	65.1	17
2001—February	18.9	* 3.9	* 2.4	* 5.4	13.7	44.3	75.6	21
TOTAL								
2000—February	107.3	25.6	16.4	22.1	40.6	212.0	50.1	12
2000—December	92.8	23.8	11.7	27.8	33.5	189.6	49.7	13
2001—January	105.2	23.2	20.9	28.1	25.8	203.1	43.1	10
2001—February	123.4	22.5	19.2	27.7	33.2	226.0	43.1	9

TABLE 16. LABOUR FORCE STATUS, SYDNEY (MSR)

Month	Employed			Unemployed			Labour force ('000)	Unemployment rate (per cent)	Participation rate (per cent)
	Full-time workers ('000)	Part-time workers ('000)	Total ('000)	Looking for full-time work ('000)	Looking for part-time work ('000)	Total ('000)			
MALES									
February—									
1997	937.3	101.0	1,038.3	77.8	9.8	87.6	1,125.9	7.8	73.8
1998	952.8	102.7	1,055.5	64.1	13.4	77.5	1,133.1	6.8	73.2
1999	968.0	112.9	1,080.9	61.0	8.7	69.7	1,150.5	6.1	73.2
1999—									
December	1,010.4	115.9	1,126.3	45.9	11.6	57.5	1,183.8	4.9	74.2
2000—									
January	991.4	109.5	1,100.9	56.0	10.7	66.8	1,167.7	5.7	73.1
February	987.2	123.5	1,110.7	47.9	10.7	58.5	1,169.2	5.0	73.1
November	990.1	133.7	1,123.8	45.1	9.8	54.9	1,178.7	4.7	72.9
December	1,009.2	130.7	1,140.0	50.1	9.8	59.9	1,199.9	5.0	74.2
2001—									
January	984.9	133.1	1,118.0	55.1	9.5	64.6	1,182.6	5.5	73.0
February	983.2	125.1	1,108.3	59.4	14.4	73.8	1,182.2	6.2	73.0
MARRIED FEMALES									
February—									
1997	265.4	177.0	442.4	16.2	10.2	26.4	468.9	5.6	55.1
1998	272.4	187.9	460.3	16.6	6.9	23.4	483.7	4.8	53.7
1999	277.7	188.8	466.5	12.8	9.2	22.0	488.6	4.5	54.1
1999—									
December	296.2	198.3	494.4	7.5	6.6	14.1	508.5	2.8	55.0
2000—									
January	295.1	179.1	474.2	8.8	* 4.8	13.6	487.8	2.8	53.3
February	301.3	199.5	500.9	13.6	9.7	23.4	524.2	4.5	56.1
November	312.6	202.2	514.8	9.6	* 4.8	14.5	529.3	2.7	56.3
December	302.1	213.9	516.0	10.9	* 1.7	12.6	528.6	2.4	56.7
2001—									
January	298.8	190.2	489.0	9.6	6.0	15.5	504.5	3.1	54.5
February	300.3	199.9	500.3	12.4	6.1	18.4	518.7	3.6	56.1
ALL FEMALES									
February—									
1997	519.4	286.5	805.9	48.1	26.0	74.1	879.9	8.4	55.3
1998	511.4	291.5	803.0	35.7	21.8	57.5	860.5	6.7	53.3
1999	534.7	291.7	826.4	32.0	22.1	54.1	880.5	6.1	53.8
1999—									
December	561.0	312.9	873.9	26.1	15.4	41.5	915.4	4.5	55.3
2000—									
January	559.5	284.4	843.9	29.4	16.9	46.3	890.2	5.2	53.7
February	542.2	315.5	857.6	32.7	25.2	57.8	915.5	6.3	55.2
November	560.5	321.0	881.6	24.9	14.2	39.1	920.6	4.2	55.0
December	562.3	331.0	893.2	30.2	12.6	42.9	936.1	4.6	55.9
2001—									
January	556.7	299.4	856.2	28.9	16.7	45.6	901.8	5.1	53.8
February	554.3	316.9	871.2	40.2	20.1	60.3	931.5	6.5	55.6
PERSONS									
February—									
1997	1,456.6	387.5	1,844.2	125.8	35.9	161.7	2,005.8	8.1	64.3
1998	1,464.3	394.2	1,858.5	99.8	35.3	135.0	1,993.5	6.8	63.1
1999	1,502.7	404.6	1,907.3	93.0	30.8	123.8	2,031.0	6.1	63.3
1999—									
December	1,571.4	428.8	2,000.2	72.0	27.0	99.0	2,099.2	4.7	64.6
2000—									
January	1,550.9	394.0	1,944.8	85.5	27.6	113.1	2,057.9	5.5	63.2
February	1,529.4	438.9	1,968.4	80.5	35.8	116.4	2,084.7	5.6	64.0
November	1,550.6	454.7	2,005.4	70.0	24.0	94.0	2,099.4	4.5	63.8
December	1,571.5	461.7	2,033.2	80.3	22.5	102.8	2,136.0	4.8	64.9
2001—									
January	1,541.6	432.5	1,974.2	84.1	26.2	110.2	2,084.4	5.3	63.3
February	1,537.5	442.0	1,979.5	99.6	34.5	134.1	2,113.6	6.3	64.1

TABLE 17. LABOUR FORCE STATUS, BALANCE OF NSW (MSR)

Month	Employed			Unemployed			Labour force ('000)	Unemployment rate (per cent)	Participation rate (per cent)
	Full-time workers ('000)	Part-time workers ('000)	Total ('000)	Looking for full-time work ('000)	Looking for part-time work ('000)	Total ('000)			
MALES									
February—									
1997	482.2	67.7	549.9	63.4	8.9	72.4	622.3	11.6	70.1
1998	480.1	64.7	544.8	63.6	8.2	71.8	616.6	11.6	68.6
1999	485.5	78.6	564.1	52.5	10.9	63.4	627.4	10.1	69.0
1999—									
December	519.8	64.9	584.7	49.3	9.3	58.6	643.3	9.1	69.9
2000—									
January	506.2	73.1	579.3	48.8	* 4.3	53.1	632.4	8.4	68.7
February	516.3	67.0	583.3	47.9	7.4	55.3	638.6	8.7	69.3
November	499.3	77.0	576.3	43.2	6.7	49.9	626.2	8.0	67.3
December	503.7	83.5	587.2	44.3	9.1	53.4	640.6	8.3	68.8
2001—									
January	488.1	74.0	562.0	52.3	9.1	61.4	623.4	9.8	66.9
February	494.5	76.8	571.3	46.2	9.9	56.2	627.5	9.0	67.3
MARRIED FEMALES									
February—									
1997	130.8	121.8	252.6	10.2	6.7	16.9	269.5	6.3	49.9
1998	125.7	131.2	256.9	14.1	8.2	22.3	279.2	8.0	49.9
1999	130.7	128.9	259.6	11.5	* 4.4	16.7	276.2	6.0	50.9
1999—									
December	158.2	128.4	286.7	6.9	* 4.3	11.3	297.9	3.8	53.9
2000—									
January	145.7	121.4	267.1	8.1	* 3.7	11.8	278.9	4.2	49.6
February	140.3	139.1	279.4	8.0	* 4.5	12.6	292.0	4.3	52.7
November	140.9	128.7	269.6	5.8	* 2.5	8.3	277.9	3.0	50.3
December	147.5	131.7	279.1	5.7	* 3.5	9.2	288.3	3.2	51.8
2001—									
January	142.9	135.1	278.0	7.6	* 4.5	12.0	290.1	4.1	51.0
February	150.0	132.1	282.1	* 5.0	* 4.5	9.5	291.7	3.3	51.5
ALL FEMALES									
February—									
1997	208.5	181.9	390.3	31.4	19.5	50.9	441.2	11.5	48.3
1998	198.0	191.3	389.4	35.5	17.8	53.3	442.7	12.0	48.0
1999	203.7	206.3	410.0	35.4	15.0	50.4	460.4	10.9	49.4
1999—									
December	227.4	205.7	433.0	28.6	10.9	39.4	472.4	8.3	50.2
2000—									
January	217.4	195.9	413.3	25.9	8.5	34.4	447.7	7.7	47.5
February	213.5	211.1	424.6	24.3	16.0	40.4	465.0	8.7	49.3
November	227.0	209.5	436.5	18.7	12.8	31.5	468.0	6.7	49.2
December	237.0	214.1	451.0	23.2	10.2	33.4	484.4	6.9	50.9
2001—									
January	229.1	213.1	442.1	19.4	12.1	31.5	473.7	6.7	49.7
February	236.3	208.7	445.0	19.4	16.3	35.7	480.7	7.4	50.4
PERSONS									
February—									
1997	690.7	249.6	940.2	94.8	28.5	123.3	1,063.5	11.6	59.1
1998	678.1	256.1	934.2	99.1	26.0	125.1	1,059.3	11.8	58.2
1999	689.1	284.9	974.0	87.8	25.9	113.8	1,087.8	10.5	59.1
1999—									
December	747.1	270.6	1,017.7	77.9	20.1	98.0	1,115.7	8.8	59.9
2000—									
January	723.7	269.0	992.6	74.6	12.9	87.5	1,080.1	8.1	58.0
February	729.8	278.1	1,007.9	72.2	23.4	95.6	1,103.6	8.7	59.2
November	726.3	286.5	1,012.8	61.9	19.5	81.4	1,094.3	7.4	58.1
December	740.7	297.5	1,038.2	67.5	19.4	86.8	1,125.0	7.7	59.7
2001—									
January	717.1	287.0	1,004.2	71.6	21.3	92.9	1,097.1	8.5	58.2
February	730.8	285.5	1,016.3	65.6	26.3	91.9	1,108.1	8.3	58.8

**TABLE 18. EMPLOYED PERSONS: INDUSTRY AND OCCUPATION  
SYDNEY (MSR) AND BALANCE OF NSW (MSR), FEBRUARY 2001  
(\*000)**

<i>Industry division and Major occupation group</i>	<i>Males</i>	<i>Females</i>	<i>Persons</i>
<b>SYDNEY (MSR)</b>			
Industry—			
Agriculture, forestry and fishing	* 5.1	* 4.1	9.3
Mining	* 1.1	* 0.6	* 1.7
Manufacturing	167.8	80.8	248.6
Electricity, gas and water supply	10.6	* 2.0	12.6
Construction	134.9	19.2	154.1
Wholesale trade	75.9	33.8	109.7
Retail trade	135.1	134.3	269.4
Accommodation, cafes and restaurants	53.2	50.0	103.2
Transport and storage	77.1	26.9	104.0
Communication services	39.8	14.2	54.0
Finance and insurance	53.8	68.0	121.7
Property and business services	172.2	140.8	313.0
Government administration and defence	30.5	23.8	54.2
Education	37.9	73.8	111.7
Health and community services	48.6	132.7	181.2
Cultural and recreational services	30.1	27.0	57.1
Personal and other services	34.9	39.2	74.0
Occupation—			
Managers and administrators	95.3	37.3	132.5
Professionals	223.5	191.8	415.3
Associate professionals	148.3	76.8	225.1
Tradespersons and related workers	209.8	19.4	229.2
Advanced clerical and service workers	14.3	90.0	104.4
Intermediate clerical, sales and service workers	122.6	267.5	390.1
Intermediate production and transport workers	125.0	19.5	144.4
Elementary clerical, sales and service workers	67.1	111.7	178.8
Labourers and related workers	102.3	57.3	159.6
<b>Total employed</b>	<b>1,108.3</b>	<b>871.2</b>	<b>1,979.5</b>
<b>BALANCE OF NSW (MSR)</b>			
Industry—			
Agriculture, forestry and fishing	70.9	31.9	102.8
Mining	10.7	* 0.0	10.7
Manufacturing	91.0	26.9	117.9
Electricity, gas and water supply	7.9	* 0.7	8.6
Construction	49.6	7.5	57.1
Wholesale trade	29.0	10.8	39.8
Retail trade	76.2	86.7	162.8
Accommodation, cafes and restaurants	30.5	36.0	66.4
Transport and storage	37.3	9.1	46.4
Communication services	12.9	* 3.8	16.6
Finance and insurance	6.1	13.3	19.4
Property and business services	49.3	41.0	90.2
Government administration and defence	28.3	14.3	42.7
Education	26.2	49.9	76.1
Health and community services	21.1	84.4	105.5
Cultural and recreational services	8.6	8.5	17.1
Personal and other services	15.7	20.2	35.9
Occupation—			
Managers and administrators	69.1	24.0	93.2
Professionals	67.8	85.3	153.1
Associate professionals	62.7	44.9	107.6
Tradespersons and related workers	115.5	16.8	132.3
Advanced clerical and service workers	* 4.5	37.5	42.1
Intermediate clerical, sales and service workers	49.9	118.1	168.0
Intermediate production and transport workers	87.6	10.5	98.0
Elementary clerical, sales and service workers	37.1	67.7	104.9
Labourers and related workers	77.0	40.1	117.1
<b>Total employed</b>	<b>571.3</b>	<b>445.0</b>	<b>1,016.3</b>

TABLE 19. LABOUR FORCE STATUS (a), REGIONS OF NSW AND ACT

	<i>Month</i>	<i>Employed</i> ( <i>'000</i> )	<i>Unemployed</i> ( <i>'000</i> )	<i>Labour</i> <i>force</i> ( <i>'000</i> )	<i>Unemp-</i> <i>loyment</i> <i>rate</i> ( <i>per cent</i> )	<i>Partici-</i> <i>pation</i> <i>rate</i> ( <i>per cent</i> )
INNER SYDNEY AND INNER WESTERN SYDNEY (SRs)						
MALES	2000— February	127.9	7.1	135.0	5.3	72.2
	2000— December	140.0	5.7	145.7	3.9	74.7
	2001— January	145.5	* 3.9	149.5	* 2.6	75.4
	February	143.3	6.4	149.7	4.3	75.4
FEMALES	2000— February	106.2	6.0	112.3	5.4	61.8
	2000— December	115.5	* 4.3	119.8	* 3.6	57.9
	2001— January	119.6	* 3.1	122.7	* 2.5	57.8
	February	124.4	5.7	130.1	4.4	61.0
PERSONS	2000— February	234.1	13.1	247.2	5.3	67.1
	2000— December	255.5	10.0	265.6	3.8	66.0
	2001— January	265.1	7.0	272.1	2.6	66.3
	February	267.7	12.2	279.8	4.3	67.9
INNER SYDNEY (SR)						
MALES	2000— February	82.3	6.4	88.6	7.2	74.4
	2000— December	88.7	4.7	93.4	5.1	77.3
	2001— January	96.4	* 2.8	99.2	* 2.8	78.5
	February	92.9	6.1	99.0	6.2	79.0
FEMALES	2000— February	66.3	4.4	70.7	6.2	63.4
	2000— December	75.8	* 3.6	79.4	* 4.5	62.1
	2001— January	78.0	* 2.4	80.4	* 2.9	61.3
	February	78.5	4.4	82.9	5.3	63.1
PERSONS	2000— February	148.6	10.8	159.3	6.7	69.1
	2000— December	164.5	8.3	172.8	4.8	69.5
	2001— January	174.3	5.2	179.5	2.9	69.8
	February	171.3	10.6	181.9	5.8	70.9
EASTERN SUBURBS (SR)						
MALES	2000— February	72.4	2.9	75.3	3.9	71.5
	2000— December	75.5	* 2.1	77.6	* 2.6	75.5
	2001— January	65.8	3.5	69.3	5.1	70.5
	February	65.6	2.8	68.4	4.1	72.7
FEMALES	2000— February	50.9	3.2	54.1	5.9	53.1
	2000— December	58.7	3.0	61.7	4.9	62.0
	2001— January	53.7	* 2.2	56.0	* 4.0	57.7
	February	52.3	4.8	57.1	8.4	58.5
PERSONS	2000— February	123.3	6.1	129.4	4.7	62.5
	2000— December	134.2	5.1	139.3	3.6	68.9
	2001— January	119.5	5.8	125.3	4.6	64.1
	February	117.9	7.6	125.5	6.1	65.5

TABLE 19. LABOUR FORCE STATUS (a), REGIONS OF NSW AND ACT—continued

	Month	Employed ( <i>'000</i> )	Unemployed ( <i>'000</i> )	Labour force ( <i>'000</i> )	Unemp- loyment rate (per cent)	Partici- pation rate (per cent)
ST GEORGE—SUTHERLAND (SR)						
MALES	2000— February	120.6	2.9	123.5	2.3	73.5
	2000— December	121.3	4.3	125.6	3.4	74.4
	2001— January	115.4	5.3	120.7	4.4	72.5
	2001— February	121.8	3.2	125.0	2.6	72.6
FEMALES	2000— February	97.4	3.4	100.8	3.4	58.2
	2000— December	97.3	4.6	101.8	4.5	56.1
	2001— January	91.4	5.2	96.6	5.4	55.0
	2001— February	100.3	4.8	105.1	4.5	57.4
PERSONS	2000— February	218.0	6.3	224.3	2.8	65.7
	2000— December	218.6	8.8	227.4	3.9	64.9
	2001— January	206.8	10.5	217.3	4.9	63.5
	2001— February	222.1	8.0	230.1	3.5	64.8
CANTERBURY—BANKSTOWN (SR)						
MALES	2000— February	81.6	6.5	88.1	7.4	72.8
	2000— December	76.7	5.4	82.1	6.6	68.5
	2001— January	75.6	5.5	81.1	6.7	66.1
	2001— February	78.1	6.1	84.3	7.3	67.2
FEMALES	2000— February	58.9	4.5	63.5	7.2	49.9
	2000— December	53.7	* 1.3	55.0	* 2.4	44.4
	2001— January	50.1	3.4	53.6	6.4	41.0
	2001— February	49.0	4.1	53.2	7.8	42.2
PERSONS	2000— February	140.6	11.1	151.6	7.3	61.0
	2000— December	130.4	6.8	137.1	4.9	56.3
	2001— January	125.8	8.9	134.7	6.6	53.1
	2001— February	127.2	10.3	137.5	7.5	54.7
FAIRFIELD—LIVERPOOL AND OUTER SOUTH WESTERN SYDNEY (SRs)						
MALES	2000— February	146.0	12.1	158.1	7.7	73.2
	2000— December	156.1	15.7	171.7	9.1	76.2
	2001— January	143.6	19.9	163.5	12.2	74.2
	2001— February	143.3	20.0	163.3	12.2	73.5
FEMALES	2000— February	106.8	12.5	119.3	10.4	52.5
	2000— December	115.8	9.3	125.1	7.5	54.5
	2001— January	102.5	9.1	111.6	8.1	50.8
	2001— February	109.8	12.0	121.7	9.8	53.7
PERSONS	2000— February	252.8	24.6	277.4	8.9	62.6
	2000— December	271.8	25.0	296.9	8.4	65.3
	2001— January	246.1	28.9	275.0	10.5	62.5
	2001— February	253.1	31.9	285.0	11.2	63.5



TABLE 19. LABOUR FORCE STATUS (a), REGIONS OF NSW AND ACT—continued

	<i>Month</i>	<i>Employed</i> ( <i>'000</i> )	<i>Unemployed</i> ( <i>'000</i> )	<i>Labour</i> <i>force</i> ( <i>'000</i> )	<i>Unemp-</i> <i>loyment</i> <i>rate</i> ( <i>per cent</i> )	<i>Partici-</i> <i>pation</i> <i>rate</i> ( <i>per cent</i> )
FAIRFIELD—LIVERPOOL (SR)						
MALES	2000— February	78.8	8.7	87.5	9.9	69.1
	2000— December	85.9	11.6	97.4	11.9	73.4
	2001— January	83.1	13.1	96.3	13.7	70.9
	2001— February	84.3	11.9	96.2	12.4	71.8
FEMALES	2000— February	58.9	6.4	65.3	9.7	48.9
	2000— December	59.7	6.4	66.1	9.7	48.7
	2001— January	55.3	6.3	61.6	10.2	45.0
	2001— February	56.8	7.7	64.5	12.0	47.5
PERSONS	2000— February	137.7	15.0	152.8	9.8	58.7
	2000— December	145.6	18.0	163.6	11.0	60.9
	2001— January	138.4	19.4	157.8	12.3	57.9
	2001— February	141.1	19.6	160.7	12.2	59.6
CENTRAL WESTERN SYDNEY (SR)						
MALES	2000— February	76.8	3.7	80.5	4.6	69.5
	2000— December	81.7	2.4	84.1	2.8	69.0
	2001— January	81.3	3.2	84.5	3.8	69.5
	2001— February	75.7	3.1	78.8	4.0	66.7
FEMALES	2000— February	52.2	* 1.7	53.8	* 3.1	46.0
	2000— December	48.3	3.0	51.2	5.8	44.7
	2001— January	50.1	* 1.6	51.7	* 3.1	43.8
	2001— February	49.5	* 2.0	51.5	* 3.9	44.2
PERSONS	2000— February	129.0	5.4	134.4	4.0	57.7
	2000— December	130.0	5.3	135.3	3.9	57.2
	2001— January	131.4	4.8	136.2	3.5	56.8
	2001— February	125.2	5.1	130.3	3.9	55.5
OUTER WESTERN SYDNEY (SR) AND BLACKTOWN (C) (b)						
MALES	2000— February	168.8	10.0	178.8	5.6	74.7
	2000— December	162.8	8.5	171.3	4.9	76.0
	2001— January	161.4	9.2	170.6	5.4	76.5
	2001— February	155.5	12.7	168.1	7.5	74.6
FEMALES	2000— February	128.8	10.3	139.1	7.4	58.7
	2000— December	130.1	7.3	137.4	5.3	61.8
	2001— January	124.2	9.4	133.6	7.0	60.1
	2001— February	121.3	11.9	133.2	9.0	59.6
PERSONS	2000— February	297.6	20.3	317.9	6.4	66.7
	2000— December	292.9	15.8	308.7	5.1	69.0
	2001— January	285.5	18.6	304.2	6.1	68.3
	2001— February	276.7	24.6	301.3	8.2	67.1

TABLE 19. LABOUR FORCE STATUS (a), REGIONS OF NSW AND ACT—continued

	Month	Employed ( '000)	Unemployed ( '000)	Labour force ( '000)	Unemp- loyment rate (per cent)	Partici- pation rate (per cent)
LOWER NORTHERN SYDNEY (SR)						
MALES	2000— February	74.3	* 3.1	77.4	* 4.1	77.4
	2000— December	80.0	* 1.0	81.0	* 1.2	75.4
	2001— January	79.0	* 2.7	81.8	* 3.4	76.9
	2001— February	71.3	* 2.9	74.2	* 3.9	74.9
FEMALES	2000— February	59.3	3.9	63.2	6.1	55.5
	2000— December	70.4	* 2.0	72.3	* 2.7	62.3
	2001— January	63.4	* 1.3	64.8	* 2.0	58.0
	2001— February	60.4	3.3	63.7	5.2	59.5
PERSONS	2000— February	133.5	7.0	140.6	5.0	65.7
	2000— December	150.4	* 3.0	153.3	* 1.9	68.6
	2001— January	142.5	4.1	146.5	2.8	67.2
	2001— February	131.7	6.2	137.9	4.5	66.9
HORNSBY—KU-RING-GAI (SR) AND BAULKHAM HILLS (A) (b)						
MALES	2000— February	117.4	* 2.1	119.5	* 1.7	78.7
	2000— December	116.5	4.0	120.5	3.3	77.9
	2001— January	121.6	3.6	125.2	2.9	77.4
	2001— February	121.3	6.3	127.6	4.9	78.1
FEMALES	2000— February	100.5	6.1	106.6	5.8	61.3
	2000— December	87.0	3.3	90.3	3.6	55.4
	2001— January	88.9	3.4	92.3	3.7	54.7
	2001— February	99.8	5.0	104.9	4.8	60.8
PERSONS	2000— February	217.9	8.2	226.1	3.6	69.4
	2000— December	203.5	7.3	210.8	3.4	66.4
	2001— January	210.6	6.9	217.5	3.2	65.8
	2001— February	221.1	11.3	232.5	4.9	69.2
NORTHERN BEACHES (SR)						
MALES	2000— February	67.3	* 2.5	69.7	* 3.6	75.2
	2000— December	68.8	3.4	72.2	4.7	78.4
	2001— January	70.5	* 1.8	72.3	* 2.5	78.3
	2001— February	67.2	4.2	71.4	5.9	79.5
FEMALES	2000— February	58.5	* 1.3	59.8	* 2.2	60.2
	2000— December	62.0	* 1.0	62.9	* 1.5	64.6
	2001— January	59.5	* 2.1	61.6	* 3.4	62.5
	2001— February	51.5	* 2.0	53.4	* 3.7	59.6
PERSONS	2000— February	125.8	3.8	129.5	2.9	67.5
	2000— December	130.7	4.4	135.1	3.3	71.3
	2001— January	130.0	3.9	133.9	2.9	70.1
	2001— February	118.7	6.1	124.8	4.9	69.6

TABLE 19. LABOUR FORCE STATUS (a), REGIONS OF NSW AND ACT—continued

	<i>Month</i>	<i>Employed</i> ( <i>'000</i> )	<i>Unemployed</i> ( <i>'000</i> )	<i>Labour</i> <i>force</i> ( <i>'000</i> )	<i>Unemp-</i> <i>loyment</i> <i>rate</i> ( <i>per cent</i> )	<i>Partici-</i> <i>pation</i> <i>rate</i> ( <i>per cent</i> )
GOSFORD—WYONG (SR)						
MALES	2000— February	57.7	5.6	63.3	8.8	62.1
	2000— December	60.5	7.5	68.0	11.0	64.9
	2001— January	58.2	6.0	64.2	9.4	59.5
	2001— February	65.2	6.2	71.4	8.7	63.7
FEMALES	2000— February	38.2	4.9	43.1	11.4	40.2
	2000— December	54.5	3.8	58.4	6.6	48.9
	2001— January	52.7	4.7	57.5	8.3	47.6
	2001— February	52.9	4.6	57.5	8.1	48.0
PERSONS	2000— February	95.9	10.5	106.4	9.9	50.9
	2000— December	115.1	11.3	126.4	9.0	56.3
	2001— January	110.9	10.8	121.7	8.8	53.2
	2001— February	118.1	10.8	128.9	8.4	55.6
HUNTER (SR)						
MALES	2000— February	142.7	17.5	160.2	10.9	68.4
	2000— December	152.1	16.9	169.0	10.0	68.7
	2001— January	141.8	20.1	161.9	12.4	66.0
	2001— February	153.7	18.1	171.8	10.5	68.4
FEMALES	2000— February	107.2	8.9	116.1	7.6	48.7
	2000— December	117.4	12.7	130.1	9.8	49.8
	2001— January	112.4	12.8	125.2	10.2	48.6
	2001— February	117.8	12.8	130.5	9.8	51.2
PERSONS	2000— February	249.9	26.4	276.3	9.5	58.5
	2000— December	269.5	29.7	299.2	9.9	58.9
	2001— January	254.2	32.9	287.1	11.5	57.1
	2001— February	271.5	30.9	302.4	10.2	59.7
NEWCASTLE (SRS)						
MALES	2000— February	123.5	16.1	139.6	11.5	69.2
	2000— December	130.2	16.6	146.8	11.3	68.8
	2001— January	120.2	19.8	139.9	14.1	65.5
	2001— February	132.3	17.4	149.8	11.6	68.5
FEMALES	2000— February	93.5	7.5	101.0	7.5	50.0
	2000— December	102.0	12.1	114.1	10.6	50.4
	2001— January	97.8	11.9	109.6	10.8	49.0
	2001— February	103.3	11.4	114.7	10.0	52.0
PERSONS	2000— February	217.0	23.6	240.6	9.8	59.6
	2000— December	232.2	28.7	260.8	11.0	59.3
	2001— January	217.9	31.6	249.5	12.7	57.1
	2001— February	235.6	28.9	264.5	10.9	60.2

TABLE 19. LABOUR FORCE STATUS (a), REGIONS OF NSW AND ACT—continued

	<i>Month</i>	<i>Employed</i> ( '000)	<i>Unemployed</i> ( '000)	<i>Labour force</i> ( '000)	<i>Unemployment rate</i> (per cent)	<i>Participation rate</i> (per cent)
ILLAWARRA AND SOUTH EASTERN (SRs) (c)						
MALES	2000— February	144.4	13.0	157.4	8.2	68.3
	2000— December	148.6	10.0	158.6	6.3	70.4
	2001— January	139.1	10.7	149.8	7.1	66.0
	2001— February	140.7	12.2	152.9	8.0	67.9
FEMALES	2000— February	98.8	7.7	106.4	7.2	46.9
	2000— December	113.4	5.8	119.2	4.9	49.8
	2001— January	108.3	6.3	114.6	5.5	48.2
	2001— February	106.3	7.0	113.4	6.2	48.3
PERSONS	2000— February	243.2	20.6	263.8	7.8	57.7
	2000— December	261.9	15.8	277.8	5.7	59.8
	2001— January	247.4	16.9	264.4	6.4	56.9
	2001— February	247.1	19.2	266.3	7.2	57.9
ILLAWARRA (SR)						
MALES	2000— February	97.1	9.1	106.2	8.6	66.5
	2000— December	107.6	8.6	116.2	7.4	70.9
	2001— January	102.5	8.5	111.0	7.7	67.7
	2001— February	103.8	8.4	112.2	7.5	70.0
FEMALES	2000— February	66.0	4.9	70.9	6.9	45.2
	2000— December	81.0	4.2	85.3	4.9	50.0
	2001— January	76.9	4.9	81.8	6.0	48.4
	2001— February	78.2	4.5	82.7	5.4	49.5
PERSONS	2000— February	163.1	14.0	177.0	7.9	55.9
	2000— December	188.7	12.8	201.5	6.3	60.2
	2001— January	179.4	13.4	192.8	7.0	57.9
	2001— February	182.1	12.9	194.9	6.6	59.6
WOLLONGONG (SRS)						
MALES	2000— February	70.9	5.5	76.4	7.2	69.5
	2000— December	81.2	7.6	88.8	8.6	71.5
	2001— January	75.3	6.3	81.6	7.7	67.8
	2001— February	77.9	6.2	84.1	7.4	70.8
FEMALES	2000— February	46.9	4.1	51.0	8.0	47.2
	2000— December	58.5	3.6	62.2	5.9	48.3
	2001— January	55.1	4.2	59.4	7.1	46.8
	2001— February	57.2	3.5	60.7	5.8	48.6
PERSONS	2000— February	117.8	9.6	127.4	7.5	58.5
	2000— December	139.7	11.2	151.0	7.4	59.7
	2001— January	130.4	10.5	141.0	7.5	57.1
	2001— February	135.0	9.8	144.8	6.8	59.5

TABLE 19. LABOUR FORCE STATUS (a), REGIONS OF NSW AND ACT—continued

	Month	Employed ( <i>'000</i> )	Unemployed ( <i>'000</i> )	Labour force ( <i>'000</i> )	Unemp- loyment rate (per cent)	Partici- pation rate (per cent)
RICHMOND—TWEED AND MID-NORTH COAST (SRs)						
MALES	2000— February	100.2	12.9	113.2	11.4	63.8
	2000— December	92.9	16.0	108.9	14.7	60.2
	2001— January	91.9	17.1	109.1	15.7	59.8
	2001— February	90.3	15.8	106.1	14.9	59.0
FEMALES	2000— February	82.7	13.7	96.4	14.2	49.0
	2000— December	79.0	9.0	88.0	10.3	49.2
	2001— January	82.3	7.3	89.6	8.2	49.3
	2001— February	80.9	8.4	89.2	9.4	49.2
PERSONS	2000— February	182.9	26.6	209.6	12.7	56.0
	2000— December	171.9	25.0	196.9	12.7	54.7
	2001— January	174.2	24.5	198.7	12.3	54.6
	2001— February	171.1	24.2	195.3	12.4	54.1
NORTHERN, FAR WEST—NORTH WESTERN AND CENTRAL WEST (SRs) (d)						
MALES	2000— February	127.8	8.1	135.8	6.0	72.9
	2000— December	120.1	6.2	126.3	4.9	71.3
	2001— January	123.3	8.6	131.9	6.5	72.3
	2001— February	117.9	* 4.8	122.7	* 3.9	69.0
FEMALES	2000— February	90.0	8.0	98.1	8.2	52.9
	2000— December	87.6	* 4.1	91.7	* 4.4	52.7
	2001— January	86.0	* 3.3	89.3	* 3.7	50.0
	2001— February	88.6	* 4.8	93.4	* 5.1	51.2
PERSONS	2000— February	217.8	16.1	233.9	6.9	62.9
	2000— December	207.7	10.3	218.0	4.7	62.1
	2001— January	209.3	11.9	221.2	5.4	61.3
	2001— February	206.5	9.6	216.1	4.4	60.0
MURRAY—MURRUMBIDGEE (SR)						
MALES	2000— February	68.2	* 3.8	72.0	* 5.2	77.2
	2000— December	73.5	* 4.3	77.8	* 5.5	76.2
	2001— January	65.9	* 4.9	70.8	* 6.9	74.5
	2001— February	68.7	* 5.3	74.0	* 7.2	75.1
FEMALES	2000— February	45.9	* 2.1	48.0	* 4.4	49.9
	2000— December	53.6	* 1.7	55.4	* 3.2	56.1
	2001— January	53.1	* 1.8	54.9	* 3.3	56.4
	2001— February	51.4	* 2.7	54.1	* 5.1	54.0
PERSONS	2000— February	114.1	5.9	120.0	4.9	63.3
	2000— December	127.1	6.0	133.1	4.5	66.3
	2001— January	119.0	6.7	125.7	5.3	65.3
	2001— February	120.1	8.0	128.1	6.3	64.5

TABLE 19. LABOUR FORCE STATUS (a), REGIONS OF NSW AND ACT—continued

	<i>Month</i>	<i>Employed</i> ( '000)	<i>Unemployed</i> ( '000)	<i>Labour force</i> ( '000)	<i>Unemployment rate</i> (per cent)	<i>Participation rate</i> (per cent)
AUSTRALIAN CAPITAL TERRITORY AND SOUTH EASTERN (SRs) (c)						
MALES	2000— February	134.3	9.2	143.6	6.4	76.6
	2000— December	130.4	6.3	136.7	4.6	75.9
	2001— January	122.8	7.5	130.3	5.7	71.7
	2001— February	123.8	9.6	133.4	7.2	72.5
FEMALES	2000— February	111.9	7.8	119.7	6.5	62.0
	2000— December	113.6	4.6	118.2	3.9	61.3
	2001— January	109.2	5.7	114.9	5.0	59.5
	2001— February	106.9	6.9	113.8	6.1	59.2
PERSONS	2000— February	246.2	17.0	263.2	6.5	69.2
	2000— December	244.1	10.9	254.9	4.3	68.4
	2001— January	232.1	13.2	245.3	5.4	65.4
	2001— February	230.6	16.5	247.1	6.7	65.7

(a) While the Labour Force Survey is designed primarily to produce reliable estimates at the national and State/Territory level, it also delivers estimates for a number of regions within States. As with national and State estimates, regional labour force estimates are subject to sampling error. Since estimates for regions are components of corresponding estimates at the State level — and are thus based on a considerably smaller sample size — they are subject to higher relative standard error. Care should therefore be taken in interpretation of regional estimates, particularly month to month movements. Tables of standard errors are included in the Technical Note on pages 59-64 of this publication. Regional estimates from September 1997 onward may not be directly comparable with those before September 1997 because a new sample has been selected which may have different characteristics to the old. (b) New region from September 1997. (c) Estimates for the South Eastern (SR) are not published separately. Data for the South Eastern (SR) are included in ACT and South Eastern (SRs) and in Illawarra and South Eastern (SRs). (d) From September 1997 includes Far West Statistical Division, previously excluded. Break in the series from September 1997.

TABLE 20. LABOUR FORCE STATUS: ORIGINAL SERIES, ACT

Month	Employed			Unemployed			Labour force ('000)	Not in labour force ('000)	Civilian population aged 15 and over ('000)	Unemployment rate (per cent)	Participation rate (per cent)
	Full-time workers ('000)	Part-time workers ('000)	Total ('000)	Looking for full-time work ('000)	Looking for part-time work ('000)	Total ('000)					
MALES											
February—											
1997	68.4	10.5	78.9	5.9	2.6	8.5	87.4	24.2	111.6	9.8	78.3
1998	70.2	10.2	80.4	7.1	1.0	8.1	88.5	24.1	112.5	9.1	78.6
1999	69.8	12.3	82.0	4.6	1.5	6.1	88.2	26.1	114.3	6.9	77.2
1999—											
December	71.5	14.0	85.5	4.4	* 0.9	5.3	90.8	24.9	115.7	5.8	78.5
2000—											
January	72.5	12.5	84.9	5.1	1.4	6.6	91.5	24.6	116.1	7.2	78.8
February	73.2	13.8	86.9	4.2	1.2	5.4	92.3	24.3	116.6	5.8	79.2
November	74.7	14.2	88.9	3.9	1.5	5.4	94.3	24.7	118.9	5.7	79.3
December	75.9	13.6	89.5	4.0	* 0.8	4.8	94.3	24.6	118.9	5.1	79.3
2001—											
January	74.1	12.1	86.2	3.9	1.4	5.3	91.5	27.4	118.9	5.8	77.0
February	76.3	10.6	86.9	4.1	1.7	5.8	92.7	26.3	119.0	6.3	77.9
MARRIED FEMALES											
February—											
1997	27.1	15.0	42.1	1.9	1.1	3.0	45.1	22.9	68.0	6.7	66.3
1998	27.4	15.0	42.4	* 0.9	1.2	2.1	44.6	22.8	67.3	4.8	66.2
1999	26.6	16.2	42.8	* 0.6	* 0.9	1.5	44.3	23.3	67.6	3.3	65.5
1999—											
December	28.5	17.1	45.6	* 0.9	* 0.7	1.6	47.3	19.5	66.8	3.5	70.8
2000—											
January	27.4	16.2	43.6	1.1	* 0.5	1.5	45.1	21.1	66.2	3.4	68.1
February	29.0	15.4	44.4	* 0.7	* 0.9	1.6	46.0	19.5	65.5	3.5	70.2
November	30.3	19.2	49.5	* 0.2	* 0.2	* 0.4	49.9	20.8	70.6	* 0.7	70.6
December	30.7	17.4	48.1	* 0.6	* 0.2	* 0.7	48.9	21.8	70.7	* 1.5	69.1
2001—											
January	29.7	16.0	45.7	* 0.5	1.1	1.6	47.3	23.6	70.9	3.3	66.7
February	28.4	17.6	46.1	* 0.6	* 0.4	* 1.0	47.0	22.4	69.5	* 2.1	67.7
ALL FEMALES											
February—											
1997	45.7	27.8	73.4	4.2	2.4	6.6	80.1	40.7	120.8	8.3	66.3
1998	46.9	26.9	73.8	3.2	3.0	6.3	80.0	40.9	121.0	7.8	66.2
1999	48.1	27.3	75.5	2.5	3.0	5.5	81.0	40.7	121.7	6.8	66.5
1999—											
December	50.9	28.2	79.1	2.2	1.5	3.7	82.8	39.8	122.7	4.5	67.5
2000—											
January	50.4	26.9	77.3	2.6	1.3	3.9	81.2	41.7	122.9	4.8	66.1
February	53.5	25.6	79.1	2.4	2.6	5.0	84.1	38.9	123.1	5.9	68.4
November	50.8	31.5	82.3	1.4	1.3	2.7	85.0	39.3	124.3	3.1	68.4
December	51.6	29.8	81.3	1.9	1.1	3.0	84.3	40.0	124.3	3.5	67.8
2001—											
January	51.1	26.7	77.8	2.4	1.9	4.3	82.1	42.2	124.4	5.3	66.0
February	50.3	28.4	78.7	2.3	2.1	4.4	83.1	41.3	124.4	5.3	66.8
PERSONS											
February—											
1997	114.1	38.3	152.3	10.1	5.1	15.2	167.5	64.9	232.5	9.1	72.1
1998	117.1	37.1	154.2	10.4	4.0	14.3	168.5	65.0	233.5	8.5	72.2
1999	117.9	39.6	157.5	7.2	4.5	11.6	169.1	66.8	235.9	6.9	71.7
1999—											
December	122.4	42.2	164.7	6.6	2.4	9.0	173.6	64.7	238.3	5.2	72.9
2000—											
January	122.9	39.3	162.2	7.7	2.8	10.5	172.7	66.3	239.0	6.1	72.3
February	126.7	39.4	166.1	6.6	3.7	10.3	176.4	63.2	239.6	5.9	73.6
November	125.5	45.7	171.2	5.3	2.7	8.1	179.3	64.0	243.3	4.5	73.7
December	127.4	43.4	170.8	5.9	1.9	7.8	178.6	64.6	243.2	4.4	73.4
2001—											
January	125.2	38.8	164.0	6.3	3.4	9.7	173.7	69.6	243.3	5.6	71.4
February	126.6	39.0	165.6	6.4	3.8	10.2	175.8	67.6	243.4	5.8	72.2

TABLE 21. LABOUR FORCE STATUS: TREND SERIES (a), ACT

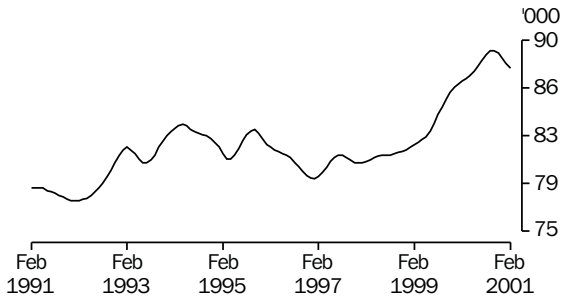
Month	Employed ( <i>'000</i> )	Unemployed ( <i>'000</i> )	Labour force ( <i>'000</i> )	Unemployment rate (per cent)	Participation rate (per cent)
MALES					
<i>February—</i>					
1997	79.3	7.5	86.8	8.7	77.7
1998	80.5	7.1	87.6	8.1	77.8
1999	81.8	5.9	87.7	6.7	76.7
<i>1999—</i>					
December	86.3	5.4	91.7	5.9	79.2
<i>2000—</i>					
January	86.6	5.3	92.0	5.8	79.2
February	86.8	5.4	92.2	5.8	79.1
March	87.0	5.4	92.3	5.8	78.9
April	87.2	5.3	92.6	5.8	78.7
May	87.6	5.2	92.8	5.6	78.6
June	88.0	5.1	93.0	5.5	78.6
July	88.4	5.0	93.4	5.3	78.7
August	88.9	4.9	93.8	5.2	78.9
September	89.2	4.9	94.1	5.2	79.1
October	89.2	4.9	94.2	5.2	79.2
November	89.0	5.0	94.0	5.3	79.0
December	88.6	5.1	93.8	5.5	78.8
<i>2001—</i>					
January	88.2	5.2	93.4	5.6	78.5
February	87.8	5.3	93.0	5.7	78.2
FEMALES					
<i>February—</i>					
1997	73.6	5.2	78.8	6.6	65.2
1998	73.0	5.2	78.2	6.6	64.6
1999	75.2	4.2	79.4	5.3	65.2
<i>1999—</i>					
December	78.6	4.3	82.9	5.2	67.5
<i>2000—</i>					
January	78.6	4.1	82.8	5.0	67.4
February	78.6	4.0	82.6	4.9	67.1
March	78.5	4.0	82.5	4.8	66.9
April	78.6	4.0	82.5	4.8	66.9
May	78.8	3.9	82.8	4.8	66.9
June	79.3	3.8	83.1	4.6	67.1
July	80.1	3.6	83.6	4.3	67.4
August	80.8	3.3	84.2	4.0	67.8
September	81.3	3.2	84.5	3.8	68.0
October	81.4	3.2	84.5	3.7	68.0
November	81.2	3.2	84.4	3.8	67.9
December	80.8	3.3	84.1	4.0	67.6
<i>2001—</i>					
January	80.3	3.4	83.7	4.1	67.3
February	79.7	3.5	83.2	4.2	66.9
PERSONS					
<i>February—</i>					
1997	152.9	12.7	165.6	7.7	71.2
1998	153.5	12.3	165.7	7.4	71.0
1999	156.9	10.1	167.0	6.0	70.8
<i>1999—</i>					
December	164.9	9.7	174.6	5.5	73.2
<i>2000—</i>					
January	165.3	9.5	174.7	5.4	73.1
February	165.4	9.4	174.7	5.4	72.9
March	165.5	9.4	174.8	5.4	72.8
April	165.8	9.3	175.1	5.3	72.7
May	166.4	9.2	175.5	5.2	72.6
June	167.3	8.9	176.2	5.0	72.7
July	168.5	8.5	177.0	4.8	72.9
August	169.7	8.2	177.9	4.6	73.2
September	170.5	8.1	178.6	4.5	73.4
October	170.6	8.1	178.7	4.5	73.5
November	170.2	8.3	178.4	4.6	73.3
December	169.4	8.4	177.8	4.8	73.1
<i>2001—</i>					
January	168.5	8.6	177.1	4.9	72.8
February	167.5	8.8	176.3	5.0	72.4

(a) See Explanatory Notes 29 and 30.

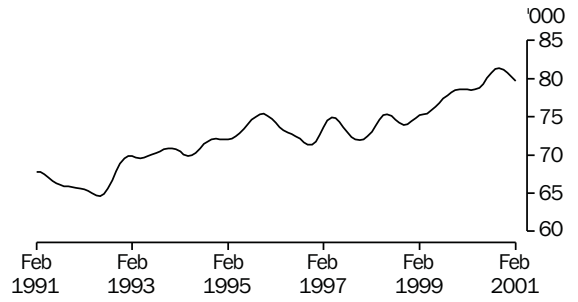


TREND SERIES, ACT(a)

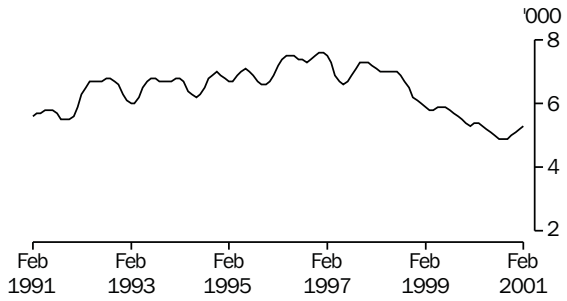
EMPLOYED MALES



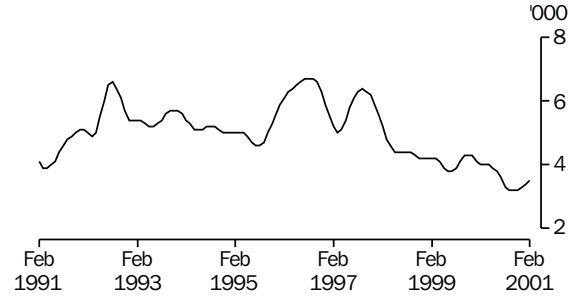
EMPLOYED FEMALES



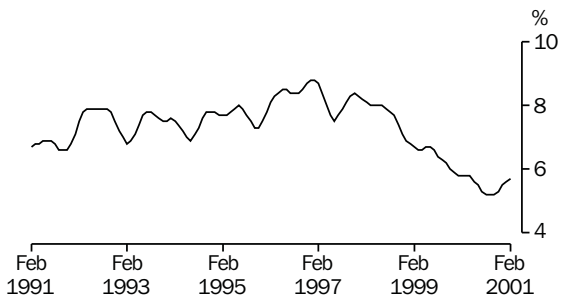
UNEMPLOYED MALES



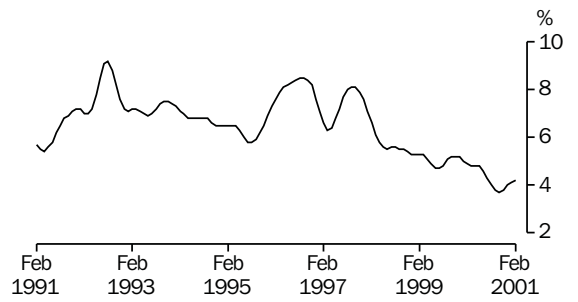
UNEMPLOYED FEMALES



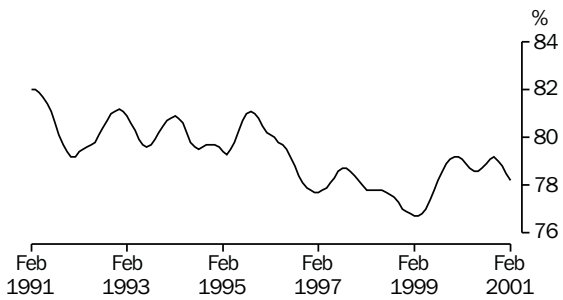
MALE UNEMPLOYMENT RATE



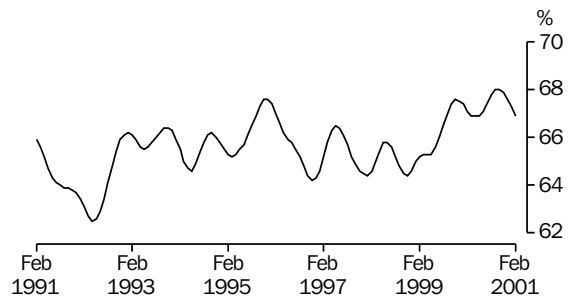
FEMALE UNEMPLOYMENT RATE



MALE PARTICIPATION RATE



FEMALE PARTICIPATION RATE



(a) Comparisons between these graphs should not be made, as their vertical axes are not similarly scaled.

**TABLE 22. LABOUR FORCE STATUS: AGE, ACT, FEBRUARY 2001**

	Persons						
	Females			Age group (years)			Total
	Males	Married	Total	15-19	20-24	25 and over	
	— '000 —						
<i>Employed</i>	86.9	46.1	78.7	12.2	20.3	133.1	165.6
Full-time workers	76.3	28.4	50.3	2.9	14.4	109.3	126.6
Part-time workers	10.6	17.6	28.4	9.3	5.8	23.8	39.0
<i>Unemployed</i>	5.8	* 1.0	4.4	2.7	2.6	4.9	10.2
Looking for full-time work	4.1	* 0.6	2.3	* 0.6	1.9	3.8	6.4
Looking for part-time work	1.7	* 0.4	2.1	2.1	* 0.7	1.1	3.8
<i>Labour force</i>	92.7	47.0	83.1	14.9	22.9	137.9	175.8
Not in labour force	26.3	22.4	41.3	9.0	3.7	54.9	67.6
Aged 15-19 attending school	4.0	* 0.1	2.3	6.2	..	..	6.2
<i>Civilian population</i>	119.0	69.5	124.4	23.9	26.6	192.8	243.4
	— per cent —						
Unemployment rate	6.3	* 2.1	5.3	18.2	11.4	3.5	5.8
Looking for full-time work	5.1	* 2.2	4.3	* 18.3	11.9	3.3	4.8
Participation rate	77.9	67.7	66.8	62.4	86.0	71.5	72.2
Employment/population ratio	73.0	66.3	63.3	51.1	76.2	69.0	68.0
	— number —						
Average weekly hours worked							
by employed persons	38.7	29.4	30.1	18.6	33.0	36.3	34.6
Average duration of unemployment (weeks)	63.9	* 38.0	32.4	11.9	34.2	80.6	50.4

**TABLE 23. NON-INSTITUTIONALISED PERSONS(a): LABOUR FORCE STATUS, BIRTHPLACE AND YEAR OF ARRIVAL, ACT, FEBRUARY 2001**  
(\*000)

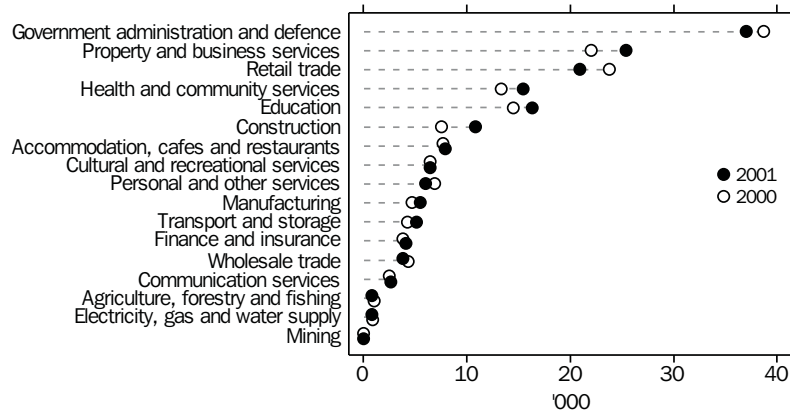
	Employed	Unemployed	Not in labour force	Labour force	Civilian population aged 15 and over
<i>Born in Australia</i>	126.2	7.4	44.1	133.6	177.7
<i>Born outside Australia</i>	39.4	2.8	22.4	42.2	64.6
Arrived before 1966	9.8	* 0.3	10.9	10.1	21.1
Arrived 1966-1970	3.2	* 0.3	3.4	3.5	6.9
Arrived 1971-1975	4.7	* 0.3	1.1	5.0	6.1
Arrived 1976-1980	3.8	* 0.2	* 0.5	4.0	4.5
Arrived 1981-1985	5.0	* 0.3	1.3	5.3	6.6
Arrived 1986-1990	5.8	* 0.3	1.9	6.1	8.0
Arrived 1991-1995	2.8	* 0.5	1.2	3.3	4.5
Arrived 1991 to survey date	6.7	1.2	2.7	7.9	10.6
<i>Main English speaking countries</i>	17.5	* 0.8	6.8	18.3	25.1
Arrived before 1966	4.5	* 0.2	3.2	4.7	7.8
Arrived 1966-1970	2.0	* 0.0	1.6	2.0	3.6
Arrived 1971-1975	2.3	* 0.2	* 0.3	2.4	2.7
Arrived 1976-1980	2.6	* 0.1	* 0.3	2.7	3.0
Arrived 1981-1985	1.1	* 0.0	* 0.4	1.1	1.5
Arrived 1986-1990	2.2	* 0.1	* 0.7	2.3	3.0
Arrived 1991-1995	* 0.9	* 0.2	* 0.4	1.1	1.5
Arrived 1991 to survey date	2.7	* 0.3	* 0.4	2.9	3.4
<i>Other than Main English speaking countries</i>	21.9	2.0	15.6	23.9	39.5
Arrived before 1966	5.3	* 0.2	7.8	5.5	13.2
Arrived 1966-1970	1.2	* 0.3	1.9	1.5	3.4
Arrived 1971-1975	2.5	* 0.1	* 0.9	2.6	3.4
Arrived 1976-1980	1.2	* 0.1	* 0.2	1.3	1.5
Arrived 1981-1985	3.9	* 0.3	* 0.9	4.2	5.1
Arrived 1986-1990	<b>3.6</b>	<b>* 0.2</b>	<b>1.2</b>	<b>3.8</b>	<b>5.0</b>
Arrived 1991-1995	1.9	* 0.3	* 0.8	2.2	3.0
Arrived 1991 to survey date	4.1	* 0.9	2.3	5.0	7.2
<b>Total</b>	165.6	10.2	66.5	175.8	242.3

(a) Excludes boarding school pupils.

**TABLE 24. EMPLOYED PERSONS: INDUSTRY, ACT  
(’000)**

Industry division	Average for year ending					
	February 2000			February 2001		
	Males	Females	Persons	Males	Females	Persons
Industry—						
Agriculture, forestry and fishing	* 0.7	* 0.3	* 1.0	* 0.6	* 0.2	* 0.8
Mining	* 0.0	* 0.0	* 0.0	* 0.0	* 0.0	* 0.0
Manufacturing	3.3	1.4	4.7	3.6	1.8	5.5
Electricity, gas and water supply	* 0.6	* 0.2	* 0.9	* 0.6	* 0.2	* 0.8
Construction	6.7	* 0.8	7.5	9.5	1.4	10.8
Wholesale trade	2.8	1.4	4.3	2.7	1.1	3.8
Retail trade	12.8	11.0	23.8	10.9	10.0	20.9
Accommodation, cafes and restaurants	3.5	4.1	7.7	4.3	3.6	7.9
Transport and storage	3.2	* 1.0	4.2	3.4	1.7	5.1
Communication services	1.5	* 1.0	2.5	1.4	1.2	2.6
Finance and insurance	1.7	2.1	3.8	1.8	2.3	4.1
Property and business services	12.8	9.2	22.0	15.3	10.1	25.4
Government administration and defence	19.9	18.8	38.7	19.0	18.0	37.0
Education	5.8	8.7	14.5	5.0	11.3	16.3
Health and community services	2.6	10.6	13.3	3.5	11.9	15.4
Cultural and recreational services	3.5	2.9	6.4	3.4	3.0	6.4
Personal and other services	3.4	3.5	6.9	3.1	2.9	6.0
<b>Total employed</b>	<b>84.8</b>	<b>77.4</b>	<b>162.2</b>	<b>88.0</b>	<b>80.6</b>	<b>168.7</b>

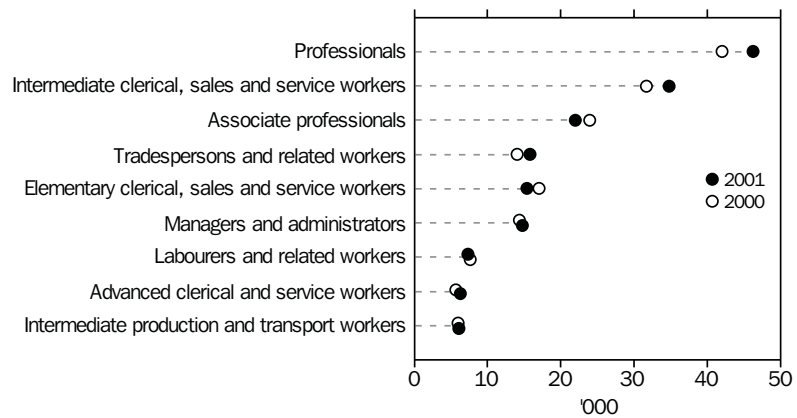
AVERAGE EMPLOYMENT BY INDUSTRY DIVISION, ACT, YEAR ENDING FEBRUARY



**TABLE 25. EMPLOYED PERSONS: OCCUPATION, ACT**  
(\*000)

Major occupation group	Average for year ending					
	February 2000			February 2001		
	Males	Females	Persons	Males	Females	Persons
Occupation—						
Managers and administrators	10.3	3.9	14.3	9.2	5.5	14.7
Professionals	22.0	20.0	42.0	24.9	21.4	46.3
Associate professionals	13.3	10.6	23.9	12.6	9.5	22.0
Tradespersons and related workers	12.4	1.6	14.0	14.6	1.1	15.8
Advanced clerical and service workers	* 0.5	5.2	5.7	* 0.4	5.9	6.3
Intermediate clerical, sales and service workers	9.1	22.5	31.7	10.6	24.2	34.8
Intermediate production and transport workers	5.3	* 0.7	6.0	5.0	* 1.0	6.1
Elementary clerical, sales and service workers	6.9	10.1	17.0	5.9	9.5	15.4
Labourers and related workers	4.8	2.7	7.6	4.8	2.5	7.3
<b>Total employed</b>	<b>84.8</b>	<b>77.4</b>	<b>162.2</b>	<b>88.0</b>	<b>80.6</b>	<b>168.7</b>

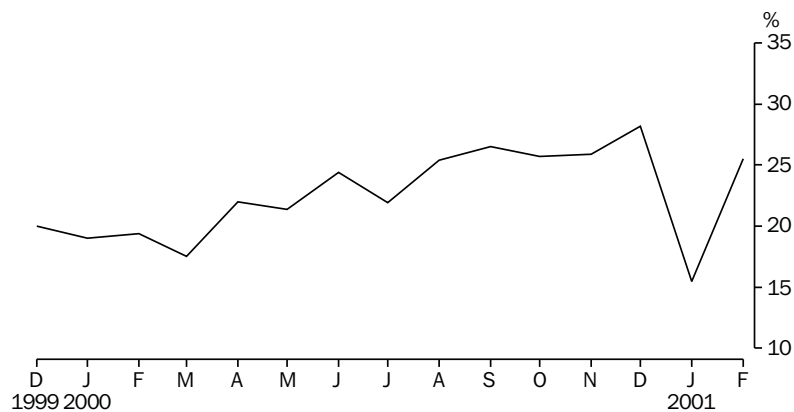
AVERAGE EMPLOYMENT BY OCCUPATION GROUP, ACT, YEAR ENDING FEBRUARY



**TABLE 26. LONG-TERM UNEMPLOYMENT, ACT**

Month	Long-term unemployment									Long-term unemployment as a proportion of total unemployment		
	52 weeks and under 104			104 weeks and over			Total			Males (per cent)	Females (per cent)	Persons (per cent)
	Males ( <i>'000</i> )	Females ( <i>'000</i> )	Persons ( <i>'000</i> )	Males ( <i>'000</i> )	Females ( <i>'000</i> )	Persons ( <i>'000</i> )	Males ( <i>'000</i> )	Females ( <i>'000</i> )	Persons ( <i>'000</i> )			
<i>1999—</i>												
December	* 0.4	* 0.3	* 0.7	* 0.9	* 0.2	1.1	1.3	* 0.5	1.8	24.5	13.5	20.0
<i>2000—</i>												
January	* 0.2	* 0.4	* 0.6	* 1.0	* 0.4	1.4	1.2	* 0.8	2.0	18.2	20.5	19.0
February	* 0.2	* 0.5	* 0.7	* 1.0	* 0.3	1.3	1.2	* 0.7	2.0	22.2	14.0	19.4
March	* 0.3	* 0.4	* 0.7	* 1.0	* 0.2	1.2	1.2	* 0.6	1.8	21.1	13.0	17.5
April	* 0.3	* 0.3	* 0.6	1.1	* 0.3	1.4	1.4	* 0.6	2.0	26.4	15.8	22.0
May	* 0.6	* 0.2	* 0.8	* 0.9	* 0.4	1.3	1.5	* 0.6	2.1	29.4	12.5	21.4
June	* 1.0	* 0.2	1.2	* 0.8	* 0.2	* 1.0	1.8	* 0.4	2.2	32.7	11.4	24.4
July	* 0.5	* 0.2	* 0.6	* 0.6	* 0.3	* 0.9	1.1	* 0.5	1.6	24.4	17.9	21.9
August	* 0.7	* 0.4	* 1.0	* 0.7	* 0.1	* 0.8	1.4	* 0.5	1.8	33.3	17.2	25.4
September	* 0.7	* 0.2	* 0.9	* 0.9	* 0.4	1.3	1.7	* 0.6	2.2	36.2	16.7	26.5
October	* 0.7	* 0.1	* 0.8	* 0.9	* 0.2	1.1	1.6	* 0.3	1.9	33.3	11.1	25.7
November	* 0.4	* 0.1	* 0.5	1.2	* 0.4	1.6	1.6	* 0.5	2.1	29.6	18.5	25.9
December	* 0.3	* 0.3	* 0.6	1.4	* 0.2	1.6	1.7	* 0.5	2.2	35.4	16.7	28.2
<i>2001—</i>												
January	* 0.4	* 0.0	* 0.4	* 0.8	* 0.3	1.1	1.2	* 0.3	1.5	22.6	7.0	15.5
February	* 0.9	* 0.2	1.1	1.2	* 0.4	1.5	2.1	* 0.5	2.6	36.2	11.4	25.5

LONG-TERM UNEMPLOYED AS A PROPORTION OF TOTAL UNEMPLOYED, ACT



## EXPLANATORY NOTES

INTRODUCTION	<p><b>1</b> This publication contains estimates of the labour force derived from the Labour Force Survey (LFS) component of the monthly population survey, which is conducted on a sample basis throughout Australia.</p>
THE POPULATION SURVEY	<p><b>2</b> This survey consists of the LFS and, in most months, one or more supplementary topics. The survey is based on a multi-stage area sample of private dwellings (houses, flats, etc.) and non-private dwellings (hotels, motels, etc.) and covers 1 in 300 of the population of NSW. The information is obtained from the occupants of selected dwellings by specially trained interviewers. The interviews are generally conducted during the two weeks beginning on the Monday between the 6th and 12th of each month. The information obtained relates to the week before the interview (i.e. the reference week).</p>
TELEPHONE INTERVIEWING	<p><b>3</b> The ABS has introduced the use of telephone interviewing into the LFS. Households selected for the LFS are interviewed each month for eight months, with one-eighth of the sample being replaced each month. The first interview is conducted face-to-face with subsequent interviews conducted by telephone (if acceptable to the respondent). Telephone interviewing was phased in from August 1996 to February 1997.</p>
SCOPE	<p><b>4</b> The LFS includes all persons aged 15 years and over, except:</p> <ul style="list-style-type: none"><li>■ members of the permanent defence forces;</li><li>■ certain diplomatic personnel of overseas governments, customarily excluded from census and estimated populations;</li><li>■ overseas residents in Australia; and</li><li>■ members of non-Australian defence forces (and their dependants) stationed in Australia.</li></ul>
SURVEY SAMPLE REDESIGN	<p><b>5</b> The LFS sample was reselected using information collected in the 1996 Census of Population and Housing. The new sample was phased in over the eight-month period from September 1997 to April 1998.</p> <p><b>6</b> For further details, see <i>Information Paper: Labour Force Survey Sample Design</i> (Cat. no. 6269.0).</p>
POPULATION BENCHMARKS	<p><b>7</b> LFS estimates are calculated in such a way as to add up to independent estimates of the civilian population aged 15 years and over (population benchmarks). From February 1999, labour force estimates have been compiled using benchmarks based on the results of the 1996 Census of Population and Housing. Small revisions were made to many of the historical estimates from January 1995 to January 1999.</p>

## DEFINITIONS

**8** The labour force category to which a person is assigned depends on the actual activity undertaken during the reference week (i.e. whether working, looking for work, etc.). The following definitions, which conform closely to the international standard definitions specified by the International Labour Office (ILO), relate only to those persons within the scope of the survey.

**9** *Employed persons* comprise civilians aged 15 years and over who, during the reference week:

- worked for one hour or more for pay, profit, commission or payment in kind (including employees, employers and own account workers) in a job or business, or on a farm; or
- worked for one hour or more without pay in a family business or on a farm (i.e. contributing family workers); or
- were employees who had a job but were not at work and were: on paid leave; on leave without pay for less than four weeks up to the end of the reference week; stood down without pay because of bad weather or plant breakdown at their place of employment for less than four weeks up to the end of the reference week; on strike or locked out; on workers' compensation and expected to be returning to their job; or receiving wages or salary while undertaking full-time study; or
- were employers, own account workers or contributing family workers who had a job, business or farm, but were not at work.

**10** Prior to April 1986, contributing family workers who worked for 1–14 hours were excluded from the category of employed persons.

**11** Employed persons can be classified into:

- *full-time workers*, i.e. those who usually worked 35 hours or more a week (in all jobs) and those who, although usually part-time workers, worked 35 hours or more during the reference week; and
- *part-time workers*, i.e. those who usually worked less than 35 hours a week and who did so during the reference week.

**12** *Unemployed persons* are those aged 15 years and over who were not employed during the reference week, and:

- had actively looked for full-time or part-time work at any time in the four weeks up to the end of the reference week, and:
- were available for work in the reference week, or would have been available except for temporary illness (i.e. lasting for less than four weeks to the end of the reference week); or
- were waiting to start a new job within four weeks from the end of the reference week and would have started in the reference week if the job had been available then; or

- were waiting to be called back to a full-time or part-time job from which they had been stood down without pay for less than four weeks up to the end of the reference week (including the whole of the reference week) for reasons other than bad weather or plant breakdown.

**13** *Actively looking for work* includes writing, telephoning or applying in person to an employer for work; answering an advertisement for a job; checking factory notice-boards or the touchscreens at the Centrelink offices; being registered with Centrelink as a jobseeker; checking or registering with any other employment agency; advertising or tendering for work; and contacting friends or relatives.

**14** *The unemployment rate* for any group is the number of unemployed persons expressed as a percentage of the labour force in the same group.

**15** *The labour force* comprises persons who were employed or unemployed as defined above.

**16** *Long-term unemployed* comprises persons unemployed for a period of 52 weeks or more.

**17** *Persons not in the labour force* are those who, during the reference week, were not in the categories employed or unemployed as defined above.

**18** *The participation rate* for any group is the labour force expressed as a percentage of the civilian population aged 15 years and over in the same group.

**19** *Duration of unemployment* is the period from the time the person began looking for work or was stood down to the end of the reference week.

**20** *Unemployed persons classified by industry and occupation.* Unemployed persons who had worked full-time for two weeks or more in the last two years are classified according to the industry and occupation of their most recent full-time job.

**21** *Industry classification.* From August 1994, LFS industry data have been classified according to the *Australian and New Zealand Standard Industrial Classification (ANZSIC), 1993* (Cat. no. 1292.0).

**22** *Occupation classification.* From August 1996, occupation data have been classified according to the *Australian Standard Classification of Occupations (ASCO), Second Edition* (Cat. no. 1220.0).

**23** *Marital status.* In the LFS, persons are classified as married or not married. Persons are classified as married if they are reported as being married (including de facto) and their spouse was a usual resident of the household at the time of the survey.



DEFINITIONS *continued*

**24** *Persons attending school or a tertiary educational institution.*

Persons attending school comprise those aged 15–19 years who, during the reference week, were enrolled full-time at secondary or high schools. Persons attending a tertiary educational institution comprise those aged 15–24 years who were enrolled full-time at universities, other institutions of higher education, TAFE colleges and theological colleges.

**25** *Employment/population ratio.* For any group, the number of employed persons expressed as a percentage of the civilian population aged 15 years and over in the same group.

STATISTICAL AREAS

**26** The regional structure for NSW used in tables 16–19 is based on the Statistical Region structure of the *Australian Standard Geographical Classification (ASGC)* (Cat. no. 1216.0).

**27** Changes were made to labour force regions in NSW from September 1997. Blacktown–Baulkham Hills SR was split up with Blacktown being merged with Outer Western Sydney SR to form Outer Western Sydney SR and Blacktown (C) and Baulkham Hills being merged with Hornsby–Ku-ring-gai SR to form Hornsby–Ku-ring-gai SR and Baulkham Hills (A). In addition, Northern, Far West–North Western and Central West SRs now include the Far West Statistical Division, previously excluded. This has resulted in a series break in the data for this area.

**28** For further details, see *Information Paper: Regional Labour Force Statistics, September 1997* (Cat. no. 6262.0).

SEASONAL ADJUSTMENT  
AND TREND ESTIMATION

**29** Seasonal adjustment is a means of removing the estimated effects of normal seasonal variation from the series so that the effects of other influences on the series can be more clearly recognised.

**30** Smoothing seasonally adjusted series produces a measure of the underlying trend by reducing the impact of the irregular component of the series. The trend estimates are derived by applying a 13-term Henderson-weighted moving average to the respective seasonally adjusted series. While this smoothing technique enables estimates to be produced which include the latest month, it does result in revisions to the most recent months as additional observations become available.

**31** Seasonally adjusted series for NSW appear in table 2. Trend estimates for NSW and ACT appear in tables 2 and 21 respectively. Seasonally adjusted data is not available for the ACT.

RELIABILITY OF THE  
ESTIMATES

**32** Estimates are subject to sampling and non-sampling errors. See the Technical note on pages 58–60 for more information.

## RELATED PUBLICATIONS

**33** Users may also wish to refer to the following related publications which are available from ABS Bookshops:

- *Australian Capital Territory at a Glance*, (Cat. no. 1314.8), issued annually.
- *Australian Capital Territory Business Indicators*, (Cat. no. 1303.8), issued monthly.
- *Australian Capital Territory Statistical Summary*, (Cat. no. 1307.8), issued annually.
- *Information Paper: Labour Force Survey — Sample Design*, (Cat. no. 6269.0).
- *Information Paper: Regional Labour Force Statistics, September 1997*, (Cat. no. 6262.0).
- *Labour Force, Australia, Preliminary*, (Cat. no. 6202.0), issued monthly.
- *Labour Force, Australia*, (Cat. no. 6203.0), issued monthly.

## ADDITIONAL DATA

**34** The ABS can also make available information which is not published. In general, a charge is made for providing unpublished information.

## ROUNDING

**35** Figures have been rounded and discrepancies may occur between sums of the component items and the totals shown.

## APPENDIX

### SUPPLEMENTARY TOPICS

Although emphasis in the population survey is placed on the regular collection of data on demographic and labour force characteristics, supplementary and special surveys of particular aspects of the labour force are carried out from time to time.

It was ABS practice to release statistics from supplementary and special surveys in *Labour Force, Australia* (Cat. no. 6203.0). This practice ceased with the release of the February 1996 issue of *Labour Force, Australia*. For future releases of supplementary labour data, separate publications containing summary results and key findings will be produced.

Equivalent tables at the State level are available on microfiche. In addition, other unpublished data can be provided to meet special requirements.

CATALOGUE/ PRODUCT NO.	TITLE OF PUBLICATION/STANDARD DATA SERVICE	PRICE(a) \$
6206.0	Labour Force Experience, Australia, February 1999	19.50
6209.0	Labour Mobility, Australia, February 1998	18.50
6220.0	Persons not in the Labour Force, Australia, September 2000	21.00
6222.0	Job Search Experience of Unemployed Persons, Australia, July 2000	21.00
6224.0	Labour Force Status and Other Characteristics of Families, Australia, June 2000	20.00
6227.0	Transition from Education to Work, Australia, May 2000	21.00
6245.0	Successful and Unsuccessful Job Search Experience, Australia, July 2000	21.00
6247.1	Part-time, Casual and Temporary Employment, NSW, October 1997	16.00
6250.0	Labour Force Status and Other Characteristics of Migrants, Australia, November 1999	18.50
6254.0	Career Experience, Australia, November 1998	19.00
6260.0	Labour Force Projections, Australia, 1999–2016	18.50
6265.0	Underemployed Workers, Australia, September 1999	21.00
6272.0	Participation in Education, Australia, September 1999	18.50
6275.0	Locations of Work, Australia, June 2000	21.00
6281.0	Work in Selected Culture/Leisure Activities, Australia. 1998–99	18.50
6310.0	Employee Earnings, Benefits and Trade Union Membership, Australia, August 2000	25.00
6342.0	Working Arrangements, Australia, August 1997	
6359.0	Forms of Employment, Australia, August 1998	19.00

(a) Prices quoted are subject to revision

MAJOR STATISTICAL REGION	STATISTICAL REGION/ STATISTICAL REGION SECTOR	STATISTICAL LOCAL AREA
SYDNEY	Inner Sydney and Inner Western Sydney (SRs)	Ashfield (A)
		Botany (A)
		Burwood (A)
		Concord (A)
		Drummoyne (A)
		Leichhardt (A)
		Marrickville (A)
		South Sydney (C)
		Strathfield (A)
		Sydney (C)—Inner Sydney (C)—Remainder
Inner Sydney (SR)	Inner Sydney (SR)	Botany (A)
		Leichhardt (A)
		Marrickville (A)
		South Sydney (C)
		Sydney (C)—Inner Sydney (C)—Remainder
Eastern Suburbs (SR)	Eastern Suburbs (SR)	Randwick (C)
		Waverley (A)
		Woollahra (A)
St George–Sutherland (SR)	St George–Sutherland (SR)	Hurstville (C)
		Kogarah (A)
		Rockdale (A)
		Sutherland Shire (A)
Canterbury–Bankstown (SR)	Canterbury–Bankstown (SR)	Bankstown (C)
		Canterbury (A)
Fairfield–Liverpool and Outer South Western Sydney (SRs)	Fairfield–Liverpool and Outer South Western Sydney (SRs)	Camden (A)
		Campbelltown (C)
		Fairfield (C)
		Liverpool (C)
		Wollondilly (A)
Fairfield–Liverpool (SR)	Fairfield–Liverpool (SR)	Fairfield (C)
		Liverpool (C)
Central Western Sydney (SR)	Central Western Sydney (SR)	Auburn (A)
		Holroyd (C)
		Parramatta (C)
Outer Western Sydney (SR) and Blacktown (C)	Outer Western Sydney (SR) and Blacktown (C)	Blacktown (C)
		Blue Mountains (C)
		Hawkesbury (C)
		Penrith (C)

MAJOR STATISTICAL REGION	STATISTICAL REGION/ STATISTICAL REGION SECTOR	STATISTICAL LOCAL AREA
SYDNEY <i>continued</i>	Lower Northern Sydney (SR)	Hunter's Hill (A)
		Lane Cove (A)
		Mosman (A)
		North Sydney (A)
		Ryde (C)
	Willoughby (C)	
	Hornsby–Ku-ring-gai (SR) and Baulkham Hills (A)	Baulkham Hills (A) Hornsby (A) Ku-ring-gai (A)
	Northern Beaches (SR)	Manly (A) Pittwater (A) Warringah (A)
	Gosford–Wyong (SR)	Gosford (C) Wyong (A)
BALANCE OF NSW	Hunter (SR)	Cessnock (C)
		Dungog (A)
		Gloucester (A)
		Great Lakes (A)
		Lake Macquarie (C)
		Maitland (C)
		Merrima (A)
		Murrurundi (A)
		Muswellbrook (A)
		Newcastle (C)—Inner
		Newcastle (C)—Remainder
		Port Stephens (A)
		Scone (A)
		Singleton (A)

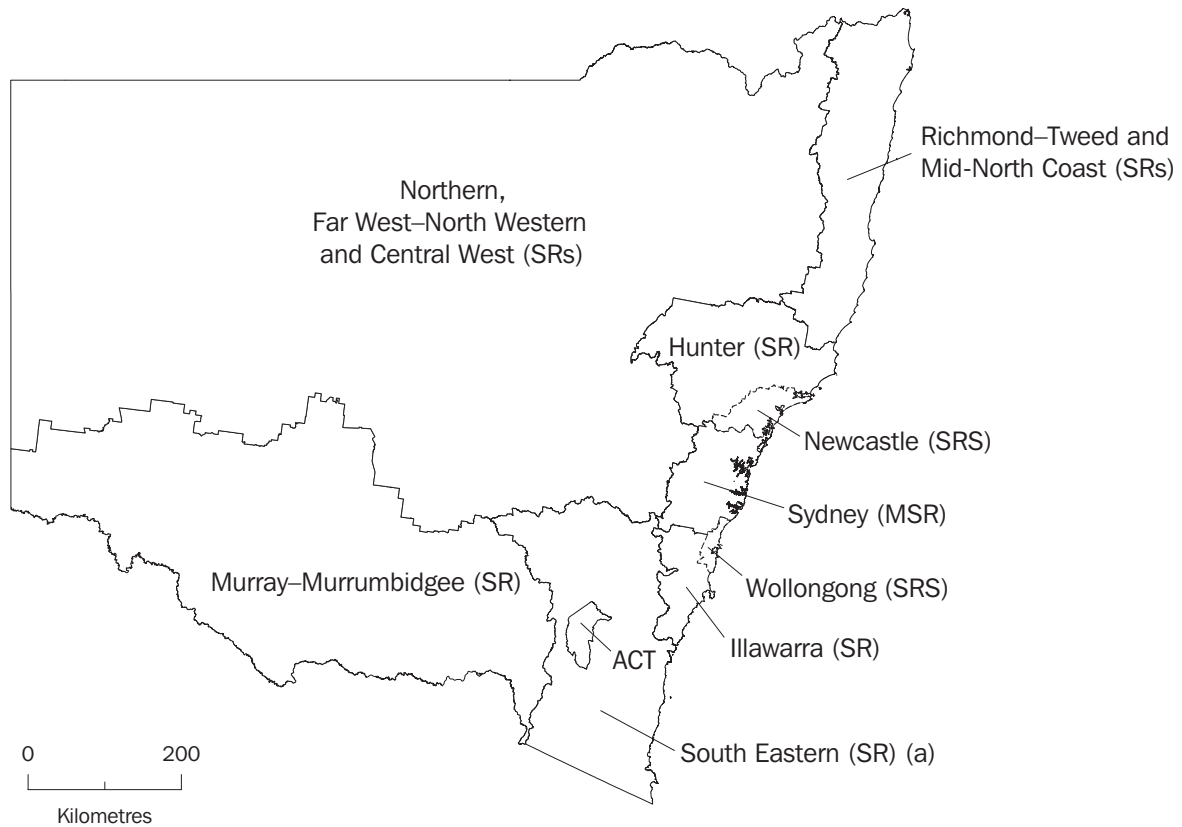
MAJOR STATISTICAL REGION	STATISTICAL REGION/ STATISTICAL REGION SECTOR	STATISTICAL LOCAL AREA
BALANCE OF NSW <i>continued</i>	Illawarra and South Eastern (SRs)	Bega Valley (A) Bombala (A) Boorowa (A) Cooma–Monaro (A) Crookwell (A) Eurobodalla (A) Goulburn (C) Gunning (A) Harden (A) Kiama (A) Mulwaree (A) Queanbeyan (C) Shellharbour (A) Shoalhaven (C) Snowy River (A) Tallaganda (A) Wingecarribee (A) Wollongong (C) Yarrowlumla (A)— Part A Yarrowlumla (A)—Part B Yass (A) Young (A)
	Illawarra (SR)	Kiama (A) Shellharbour (A) Shoalhaven (C) Wingecarribee (A) Wollongong (C)
	Richmond–Tweed and Mid-North Coast (SRs)	Ballina (A) Bellingen (A) Byron (A) Casino (A) Coffs Harbour (C) Copmanhurst (A) Grafton (C) Greater Taree (C) Hastings (A) Kempsey (A) Kyogle (A) Lismore (C) Lord Howe Island Macleay (A) Nambucca (A) Nymboida (A) Richmond River (A) Tweed (A)—Part A Tweed (A)—Part B Ulmarra (A)

MAJOR STATISTICAL REGION	STATISTICAL REGION/ STATISTICAL REGION SECTOR	STATISTICAL LOCAL AREA
BALANCE OF NSW <i>continued</i>	Northern, Far West–North Western and Central West (SRs)	Armidale (C) Barraba (A) Bathurst (C) Bingara (A) Bland (A) Blayney (A)—Part A Blayney (A)—Part B Bogan (A) Bourke (A) Brewarrina (A) Broken Hill (C) Central Darling (A) Cabonne (A)—Part A Cabonne (A)—Part B Cabonne (A)—Part C Cobar (A) Coolah (A) Coonabarabran (A) Coonamble (A) Cowra (A) Dubbo (C) Dumaresq (A) Evans (A)—Part A Evans (A)—Part B Forbes (A) Gilgandra (A) Glen Innes (A) Greater Lithgow (C) Gunnedah (A) Guyra (A) Inverell (A)—Part A Inverell (A)—Part B Lachlan (A) Manilla (A) Moree Plains (A) Mudgee (A) Narrabri (A) Narromine (A) Nundle (A) Oberon (A) Orange (C) Parkes (A) Parry (A) Quirindi (A) Rylstone (A) Severn (A) Tamworth (C) Tenterfield (A) Unincorporated Far West Uralla (A) Walcha (A) Walgett (A) Warren (A) Weddin (A) Wellington (A) Yallaroi (A)

MAJOR STATISTICAL REGION	STATISTICAL REGION/ STATISTICAL REGION SECTOR	STATISTICAL LOCAL AREA
BALANCE OF NSW <i>continued</i>	Murray–Murrumbidgee (SR)	Albury (C) Balranald (A) Berrigan (A) Carrathool (A) Conargo (A) Coolamon (A) Cootamundra (A) Corowa (A) Culcairn (A) Deniliquin (A) Griffith (C) Gundagai (A) Hay (A) Holbrook (A) Hume (A) Jerilderie (A) Junee (A) Leeton (A) Lockhart (A) Murray (A) Murrumbidgee (A) Narrandera (A) Temora (A) Tumbarumba (A) Tumut (A) Urana (A) Wagga Wagga (C) Wakool (A) Wentworth (A) Windouran (A)
NOT APPLICABLE	Australian Capital Territory and South Eastern (SRs)	Australian Capital Territory Bega Valley (A) Bombala (A) Boorowa (A) Cooma–Monaro (A) Crookwell (A) Eurobodalla (A) Goulburn (C) Gunning (A) Harden (A) Mulwaree (A) Queanbeyan (C) Snowy River (A) Tallaganda (A) Yarrowlumla (A)—Part A Yarrowlumla (A)—Part B Yass (A) Young (A)



REGIONS OF NSW AND ACT



REGIONS OF SYDNEY (MSR)



- 1. Inner Sydney (SR)
- 2. Eastern Suburbs (SR)
- 3. St George-Sutherland (SR)
- 4. Canterbury-Bankstown (SR)
- 5. Fairfield-Liverpool (SR)
- 6. Outer South Western Sydney (SR)(a)
- 7. Inner Western Sydney (SR)(a)
- 8. Central Western Sydney (SR)
- 9. Outer Western Sydney (SR) and Blacktown (C)
- 10. Lower Northern Sydney (SR)
- 11. Hornsby-Ku-ring-gai (SR) and Baulkham Hills (A)
- 12. Northern Beaches (SR)
- 13. Gosford-Wyong (SR)

(a) Not published separately

## TECHNICAL NOTE: DATA RELIABILITY

### SOURCES OF ERROR

There are a number of possible sources of error in sample surveys and these can be classified into two types: sampling error; and non-sampling error.

### NON-SAMPLING ERRORS

Non-sampling errors may arise as a result of errors in the reporting, recording or processing of the data and can occur even if there is a complete enumeration of the population. Non-sampling errors can be introduced through: inadequacies in the questionnaire; non-response; inaccurate reporting by respondents; errors in the application of survey procedures; incorrect recording of answers; and errors in data entry and processing.

It is difficult to measure the size of the non-sampling errors and the extent of these errors could vary considerably in significance from survey to survey, and from question to question. However, every effort is made in the design of the survey and development of survey procedures to minimise the effect of these errors.

### SAMPLING ERRORS

Sampling error is the error which occurs by chance because the data were only obtained from a sample, not the entire population.

#### Standard errors of estimates

One measure of the variability of estimates which occurs as a result of surveying only a sample of the population is the standard error (SE). There are about two chances in three that a survey estimate is within one standard error of the figure that would have been obtained if all persons had been included and about 19 chances in 20 that it is within two standard errors. That is, there are 19 chances in 20 that the true estimate is in the range:

$$X - 2 \times SE(X) \text{ to } X + 2 \times SE(X)$$

(where  $X$  is the estimate)

The standard error of an estimate can be obtained from the tables on pages 61–63. Linear interpolation should be used to calculate the standard error of estimates falling between the sizes of estimates listed in the table (see example on page 60).

In the tables in this publication, only estimates with relative standard errors of 25% or less, and percentages based on such estimates, are considered sufficiently reliable for most purposes. However, estimates and percentages with larger relative standard errors have been included and are preceded by an asterisk (e.g. \*3.4) to indicate they are subject to high standard errors and should be used with caution.

Standard errors of estimates *continued* The standard error can also be expressed as a percentage of the estimate and this is known as the relative standard error (RSE). The RSE is determined by dividing the standard error of an estimate SE(X) by the estimate X and expressing it as a percentage. That is:

$$\text{RSE}(X) = \frac{\text{SE}(X) \times 100}{X}$$

(where X is the estimate)

The look up list on the following page provides a guide for the calculation of standard errors and relative standard errors for a range of statistics.

#### CALCULATING STANDARD ERRORS

The methods described below refer to the calculation of standard errors for NSW estimates. Standard errors of ACT estimates should be calculated from the table on page 63.

MEASURE OF RELIABILITY TO BE DETERMINED	METHOD
Standard errors of estimates of employed persons.	Determine the SE from the table on page 61 directly.
Standard errors of estimates of unemployed persons.	Multiply the SE from the table on page 61 by 1.06.
Standard errors of estimates of persons not in the labour force.	Multiply the SE from the table on page 61 by 1.1.
Standard errors of rates (e.g. the unemployment rate which is based on the number of unemployed persons expressed as a percentage of the number of persons in the labour force).	Determine the RSE of the numerator (X) and the denominator (Y) then apply the following formula: $\text{RSE} \left( \frac{X}{Y} \right) = \sqrt{[\text{RSE}(X)]^2 - [\text{RSE}(Y)]^2}$
Standard error of average duration of unemployment.	Determine the RSE for the number of persons on which the average is based and multiply this by 1.3.
Standard error of median duration of unemployment.	Determine the RSE for the number of persons on which the average is based and multiply this by 2.0.
Standard error of monthly movements.	From the table on page 62, look up the SE of the larger estimate.
Standard error of quarterly movements.	Determine the standard error of the larger estimate from the table on page 61 and multiply this by 1.11.
Standard error of annual movements.	Determine the standard error of the larger estimate from the table on page 61 and multiply this by 1.3.

## LINEAR INTERPOLATION

Linear interpolation is used to determine the standard error of an estimate which falls between two values listed in the size of estimate column in the tables on page 61 or 63. Linear interpolation is best described using an example. In November 2000, there were 727,500 ( $X_e$ ) employed persons working part-time in NSW. This estimate falls between the values 500,000 ( $X_l$ ) and 1,000,000 ( $X_u$ ) in the table on page 61.

The standard error of the estimate is determined as follows. Firstly calculate

$$\begin{aligned} F &= \frac{X_e - X_l}{X_u - X_l} \\ &= \frac{727,500 - 500,000}{1,000,000 - 500,000} \\ &= 0.46 \end{aligned}$$

Secondly, calculate the standard error of the estimate,  $SE(X_e)$  thus:

$$\begin{aligned} SE(X_e) &= SE(X_l) + (F \times [SE(X_u) - SE(X_l)]) \\ &= 8,350 + (0.46 \times [11,650 - 8,350]) \\ &= 9,868 \end{aligned}$$

Therefore the standard error of the number of employed persons working part-time in NSW in November 2000 is 9,868.

## STANDARD ERRORS LEVEL OF ESTIMATES(a), NSW

### REGIONS IN SYDNEY (MSR)

<i>Size of estimate</i>	NSW	Sydney (MSR)	Balance of NSW (MSR)	Inner Sydney and Inner Western Sydney (SRs)	Inner Sydney (SR)	Eastern Suburbs (SR)	St George-Sutherland	Canterbury-Bankstown (SR)	Fairfield-Liverpool and Outer South Western Sydney (SRs)	Fairfield-Liverpool (SR)
500	320	440	400	310	290	240	200	260	310	300
1 000	520	630	640	460	440	360	310	390	460	450
3 000	1 000	1 060	1 060	880	830	680	590	740	880	850
5 000	1 350	1 340	1 340	1 180	1 110	910	790	990	1 180	1 140
10 000	1 900	1 820	1 810	1 740	1 630	1 340	1 160	1 460	1 730	1 680
20 000	2 600	2 440	2 420	2 540	2 380	1 960	1 700	2 130	2 530	2 450
50 000	3 700	3 500	3 520	4 130	3 880	3 190	2 760	3 470	4 120	3 990
100 000	4 600	4 500	4 600	5 900	5 600	4 600	4 000	5 000	5 900	5 700
200 000	5 750	5 800	6 000	8 400	7 900	6 500	5 600	7 100	8 400	8 100
300 000	6 700	6 700	6 900	10 300	9 600	7 900	6 900	8 600	10 200	9 900
500 000	8 350	7 900	8 300	13 200	12 400	10 200	8 800	11 100	13 100	12 700
1 000 000	11 650	9 800	10 600	—	—	—	—	—	—	—
2 000 000	17 150	12 000	13 300	—	—	—	—	—	—	—
5 000 000	30 750	15 300	17 700	—	—	—	—	—	—	—

### REGIONS IN SYDNEY (MSR) — continued

<i>Size of estimates</i>	Central Western Sydney (SR)	Outer Western Sydney (SR) and Blacktown (C)	Lower Northern Sydney (SR)	Hornsby-Ku-ring-gai (SR) and Baulkham Hills (A)	Northern Beaches	Gosford Wyong (SR)
500	230	260	270	260	260	230
1 000	340	400	410	390	400	350
3 000	650	760	770	750	760	670
5 000	870	1 010	1 030	1 000	1 010	890
10 000	1 290	1 490	1 520	1 480	1 490	1 310
20 000	1 880	2 180	2 220	2 150	2 170	1 920
50 000	3 060	3 550	3 620	3 510	3 540	3 120
100 000	4 400	5 100	5 200	5 000	5 100	4 500
200 000	6 200	7 200	7 300	7 100	7 200	6 400
300 000	7 600	8 800	9 000	8 700	8 800	7 800

### REGIONS IN BALANCE OF NSW (MSR)

<i>Size of estimates</i>	Hunter (SR)	Newcastle (SRS)	Illawarra and South Eastern (SRS)	Illawarra (SR)	Wollongong (SRS)	Richmond-Tweed and Mid North Coast (SRs)	Northern, Far West and North Western and Central West (SRs)	Murray-Murrumbidgee (SR)
500	300	280	310	290	240	340	330	340
1 000	450	420	470	440	360	510	500	520
3 000	850	810	900	830	680	970	940	990
5 000	1 140	1 080	1 200	1 110	910	1 300	1 260	1 320
10 000	1 680	1 590	1 770	1 630	1 340	1 920	1 860	1 950
20 000	2 450	2 320	2 580	2 390	1 950	2 800	2 720	2 850
50 000	4 000	3 780	4 210	3 890	3 180	4 560	4 430	4 640
100 000	5 700	5 400	6 000	5 600	4 600	6 500	6 300	6 600
200 000	8 100	7 700	8 600	7 900	6 500	9 300	9 000	9 400
300 000	9 900	9 400	10 500	9 700	7 900	11 300	11 000	11 500

(a) Standard errors of estimates from September 1997. For standard errors for earlier periods, see previous issues of this publication.

**STANDARD ERRORS**
**MOVEMENT ESTIMATES(a), NSW**
**REGIONS IN SYDNEY (MSR)**

<i>Size of estimates</i>	NSW	Sydney (MSR)	Balance of NSW (MSR)	Inner Sydney and Inner Western Sydney (SRs)	Inner Sydney (SR)	Eastern Suburbs (SR)	St George-Sutherland (SR)	Canterbury-Bankstown (SR)	Western Sydney (SRs)	Fairfield Liverpool and Outer South Fairfield-Liverpool (SR)
500	580	600	580	310	280	210	200	250	270	240
1 000	730	750	720	420	380	290	270	340	370	340
3 000	1 060	1 070	1 030	700	640	490	460	570	620	560
5 000	1 260	1 270	1 220	890	810	620	580	720	790	710
10 000	1 590	1 600	1 500	1 250	1 100	850	800	1 000	1 100	1 000
20 000	2 010	2 000	1 900	1 700	1 550	1 200	1 100	1 350	1 500	1 350
50 000	2 740	2 700	2 550	2 600	2 350	1 800	1 700	2 100	2 300	2 100
100 000	3 460	3 500	3 200	3 600	3 250	2 500	2 300	2 900	3 150	2 850
200 000	4 370	4 200	4 000	4 950	4 450	3 450	3 200	4 000	4 400	3 950
300 000	5 000	4 800	4 600	5 950	5 400	4 150	3 850	4 800	5 300	4 750
500 000	5 950	5 700	5 400	7 550	6 850	5 250	4 900	6 100	6 700	6 050
1 000 000	7 510	7 100	6 800	—	—	—	—	—	—	—
2 000 000	9 490	8 900	8 500	—	—	—	—	—	—	—
5 000 000	12 920	12 000	11 400	—	—	—	—	—	—	—

**REGIONS IN SYDNEY (MSR) — continued**

<i>Size of estimate</i>	Central Western Sydney (SR)	Outer Western Sydney (SR) and Blacktown (C)	Lower Northern Sydney (SR)	Hornsby-Ku-ring-gai (SR) and Baulkham Hills (A)	Northern Beaches (SR)	Gosford Wyong(SR)
500	210	280	250	180	220	220
1 000	290	390	340	250	300	310
3 000	480	650	570	420	500	520
5 000	600	820	720	540	630	650
10 000	850	1 150	1 000	750	850	900
20 000	1 150	1 550	1 400	1 000	1 200	1 250
50 000	1 750	2 400	2 100	1 550	1 850	1 900
100 000	2 450	3 300	2 900	2 150	2 500	2 650
200 000	3 350	4 550	4 000	3 000	3 500	3 650
300 000	4 050	5 500	4 850	3 600	4 200	4 400

**REGIONS IN BALANCE OF NSW (MSR)**

<i>Size of estimate</i>	Hunter (SR)	Newcastle (SRS)	Illawarra and South Eastern (SRS)	Illawarra (SR)	Wollongong (SRS)	Richmond-Tweed and Mid North Coast (SRs)	Northern, Far West North Western and Central West (SRs)	Murray-Murrumbidgee (SR)
500	290	270	300	260	220	320	310	280
1 000	400	370	410	360	300	440	430	390
3 000	660	620	690	600	500	740	720	650
5 000	840	780	870	760	630	930	910	830
10 000	1 150	1 100	1 200	1 050	850	1 300	1 250	1 150
20 000	1 600	1 500	1 650	1 450	1 200	1 800	1 750	1 600
50 000	2 450	2 300	2 550	2 200	1 850	2 700	2 650	2 400
100 000	3 400	3 150	3 500	3 050	2 550	3 750	3 650	3 350
200 000	4 650	4 350	4 800	4 200	3 500	5 200	5 050	4 600
300 000	5 650	5 250	5 800	5 100	4 250	6 250	6 100	5 550

(a) Standard errors of month to month movements from October 1997–November 1999 onwards. For standard errors for earlier periods, see previous issues of this publication.

## STANDARD ERRORS

### STANDARD ERRORS, LEVEL ESTIMATES(a) — NSW AND ACT

<i>Size of estimate</i>	<i>ACT and South Eastern (SRs)</i>	<i>ACT</i>
500	280	210
1 000	390	270
3 000	620	400
5 000	770	500
10 000	1 020	600
20 000	1 340	800
50 000	1 910	1 200
100 000	2 500	1 650
200 000	3 200	2 250
300 000	3 700	2 700

(a) Standard errors of estimates from September 1997. For standard errors for earlier periods, see previous issues of this publication.

### STANDARD ERRORS, MOVEMENT ESTIMATES(a) — NSW AND ACT

<i>Size of estimate</i>	<i>ACT and South Eastern (SRs)</i>	<i>ACT</i>
500	220	170
1 000	280	210
3 000	420	310
5 000	510	360
10 000	650	450
20 000	850	570
50 000	1 200	760
100 000	1 550	960
200 000	2 000	1 200
300 000	2 300	1 370

(a) Standard errors of month to month movements from October 1997–November 1999 onwards. For standard errors for earlier periods, see previous issues of this publication.

## FOR MORE INFORMATION...

- INTERNET* **www.abs.gov.au** the ABS web site is the best place to start for access to summary data from our latest publications, information about the ABS, advice about upcoming releases, our catalogue, and Australia Now—a statistical profile.
- LIBRARY* A range of ABS publications is available from public and tertiary libraries Australia-wide. Contact your nearest library to determine whether it has the ABS statistics you require, or visit our web site for a list of libraries.
- CPI INFOLINE* For current and historical Consumer Price Index data, call 1902 981 074 (call cost 77c per minute).
- DIAL-A-STATISTIC* For the latest figures for National Accounts, Balance of Payments, Labour Force, Average Weekly Earnings, Estimated Resident Population and the Consumer Price Index call 1900 986 400 (call cost 77c per minute).

### INFORMATION SERVICE

Data which have been published and can be provided within five minutes are free of charge. Our information consultants can also help you to access the full range of ABS information—ABS user-pays services can be tailored to your needs, time frame and budget. Publications may be purchased. Specialists are on hand to help you with analytical or methodological advice.

- PHONE* **1300 135 070**
- EMAIL* **client.services@abs.gov.au**
- FAX* 1300 135 211
- POST* Client Services, ABS, GPO Box 796, Sydney 1041

## WHY NOT SUBSCRIBE?

ABS subscription services provide regular, convenient and prompt deliveries of ABS publications and products as they are released. Email delivery of monthly and quarterly publications is available.

- PHONE* 1300 366 323
- EMAIL* subscriptions@abs.gov.au
- FAX* 03 9615 7848
- POST* Subscription Services, ABS, GPO Box 2796Y, Melbourne 3001



2620110002015  
ISSN 1322-0179

RRP \$24.00

© Commonwealth of Australia 2001

Produced by the Australian Bureau of Statistics